

Canterbury. sink & tap



Handmade since 1960....

Nicolazzi

the ultimate traditional kitchen & bathroom tapware collection

Welcome to


Canterbury.
sink&tap

COLOUR OPTION



Classic Chrome (CR)
standard finish



Polished Nickel (NL)
standard finish



Raw Brass (OG)
standard finish



Iron (FV)
special finish*



Brushed Chrome (CB)
special finish*



Satin Chrome (CS)
special finish*



Tuscan Brass (TB)
special finish*



Bronze (BZ)
special finish*



Matt White (MW)
special finish*



Gold Brass (GB)
special finish*



Copper (RA)
special finish*



Matt Black (MB)
special finish*



Gold (GO)
special finish*



English Gold (GF)
special finish*



Antique Gold (AG)
special finish*



Satin Nickel (NS)
special finish*

* Additional cost

UNIQUE COLOUR MENU.....

"Mere colour, unspoiled by meaning, and unallied with definite form, can speak to the soul in a thousand different ways" – Oscar Wilde

Nicolazzi's choice of 16 different colour finishes, 15 of which have the unique characteristic of being "living colours", bringing to life our astonishingly beautiful tapware with a finish that elegantly matures over time.

CLASSIC CHROME (CR), applied to the maximum density that is achievable with this material our chrome gives Nicolazzi taps a deep lustre with a long durable and reliable finish (not a "living colour").

POLISHED NICKEL (NL), this typical galvanic finish is considered as the first shade of gold on the colour chart. It is a finish that changes colour over time with handling and becoming almost "blemished" in appearance achieving the desirable antique look.

RAW BRASS (OG), fast becoming a "must have finish", the attraction of this untreated metal is its ability to change colour overtime with use getting both darker and developing its own colour characteristics. Ideal for out-door use.

IRON (FV), a dark galvanic finish is a hand brushed finish combined with a matt transparent lacquer. The colour sets it apart giving it a "rare timed" appearance requiring an assertive artistic approach when introducing this finish into your design.

BRUSHED CHROME (CB), it is what it says, chrome that is hand brushed, an ageless finish that works in both modern & antique styles.

SATIN CHROME (CS), this variation on a chrome finish is applied to a rough surface giving a chrome matt effect, ideal for kitchen tapware.

TUSCAN BRASS (TB), a real antique finish achieved via the oxidation of the galvanic brass. This is a true "Living Finish" which darkens over time with use and therefore must only be cleaned with organic soap, water and a soft cloth.

BRONZE (BZ), typically bronze galvanic finish, treated with a brilliant transparent lacquer.

MATT WHITE (MW), Classic Matt White finish making traditional styling feel contemporary.

GOLD BRASS (GB), the third shade of gold caught between the two colours of GF and GO, but is neither one nor the other.

COPPER (RA), limited in its application but nevertheless a statement colour finish.

MATT BLACK (MW), Classic Matt Black finish making traditional styling feel contemporary.

GOLD (GO), this is the real McCoy, 24k gold uniquely processed from genuine gold metal and is the darkest shade of gold.

ENGLISH GOLD (GF), this is the second shade of gold known universally as "English Gold", restrained shading this delicate effect of gold makes it unashamedly acceptable.

ANTIQUÉ GOLD (AG), a galvanic gold that is hand brushed and treated with a matt lacquer to achieve both a desirable and defined appearance.

SATIN NICKEL (NS), Strongly featuring as the second most popular finish after chrome and it's easy to see why as this hand brushed nickel aligns itself beautifully with "steel", adapting to modern or classic styles.

Whilst every effort is made to replicate the colours in our "COLOUR OPTION" menu as accurate as photographic reproduction will allow, it must be used as a guide only and cannot be considered as true representation of the colour. To ensure that you are 100% satisfied with your colour choice we strongly recommend always refer to the actual finished tapware article and CST accept no liability for product selected from the colour chart without reference to the true colour sample.



Canterbury Sink and Tap presents the most beautiful, artistic range of tapware, fireclay sinks, heated towel rails, baths, showers, basins, consoles, lights and tiles available in today's Kitchen & bathroom market.

Our unique brands sourced from across Europe and the United Kingdom, are exclusively available through Canterbury Sink and Tap, enabling you, our customer, to achieve the personalised, individual look that you desire in your home.

Canterbury Sink and Tap is an all Australian Company that began 16 years ago when principal founder Nicolas Hermence struggled to find beautiful, artistic products for his own home. What you see today is a culmination of that search that has resulted in bringing together an exceptional range of products incorporating detail and finish throughout all of our brands - Nicolazzi, Shaws of Darwen, Lira, Calflex, as well as Canterbury's own brands - Canterbury Baths, Basins, Radiators, Sink, Tap and Horus Art Tiles.

Our range gives freedom to Australian designers, architects, builders and of course you. Recognised for its quality, style and design allowing you to make the perfect choice in selecting from our range to make your bathroom or kitchen projects a reality and in a class of its own especially, when using the unique colour options not previously available here in Australia.

Canterbury Sink and Tap works harmoniously via our retail partners in order to offer our excellent range of products to the Australian market and as you would expect from a professional and responsible company, Canterbury Sink and Tap complies with Wels and Watermark standards.

Indeed, our ranges are also certified for the American market which also reaffirms and ensures a detailed and high level of compliance around the world.



NICOLAZZI BRAND HERITAGE

Nicolazzi, our prestigious Italian tapware brand have been manufacturing high quality tapware since 1960 and Bruno Nicolazzi is seen as a market leader in design, quality and colour options around the world of classic tapware.

To complement the Nicolazzi tapware, we have combined an impressive range of handmade showers by celebrated shower producer, Calflex of Italy. The Classic Colonial shower range is assuredly made of solid brass with a variety of options in style and finish available.

NICOLAZZI PERMANENCE & DURABILITY

Our Nicolazzi tap range is made of “DZR” Zinc Free Brass and in our range we also offer “DZR Lead Free Brass” which is the most environmentally friendly product of its kind available in the market today.

This innovation is unique to Canterbury Sink & Tap in Australia by way of our close collaboration with Nicolazzi in perfecting the “Ecologico” system allowing us to be the first manufacturer to introduce this technology into the European Market. The process involves the cleansing of heavy metals from inside your tap ware and provides you with peace of mind that each and every glass of drinking water coming from your Nicolazzi tap is clean fresh water with no impurities.

NICOLAZZI COLOUR & FINISH

With Finishes not previously available here in Australia, the stunning choice of finished colours is exceptional from Antique Bronze, Black Matt and Iron (Iron known in Italian as Ferio Vecchio, which literally means Old Iron). This variety of colour combined with distinctive handle options allow you to captivate the beauty, colour and essence associated with our traditional tapware. The Black Swarovski crystal handle is just one example when combined with our superb kitchen taps in Chrome and highlights what we at Canterbury Sink & Tap call, “Design Edge and Perfection”.

The Nicolazzi logo is a stylized, cursive script in a golden-yellow color, positioned in the bottom right corner of the page. The background of the entire page is a high-angle, sepia-toned photograph of a historic Italian town, featuring a prominent bell tower and buildings along a river.

index



2	Colour Option
4	Canterbury Sink and Tap History
8	Kitchen Tapware
19	Bathroom Range
35	Shower Range
42	Accessories
54	Nicolazzi Tapware Warranty
55	Quick Reference Finder page
59	Kitchen & Bathroom Handle Collection

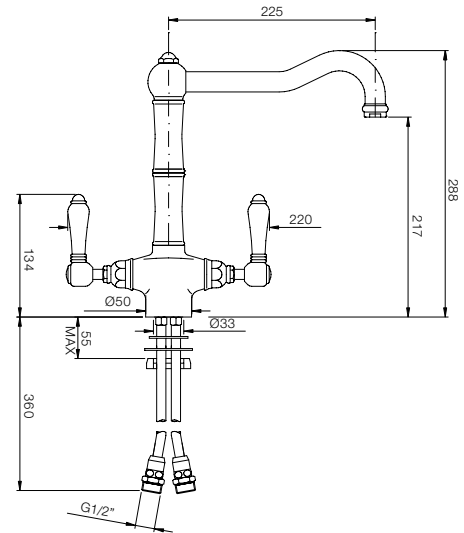
CHEN TAPWARE KITCHEN TAPWARE KITCHEN TAPWA
RE KITCHEN TAPWARE KITCHEN TAP
WARE KITCHEN TAPWARE KITCHEN TAPWARE KITCH
EN TAPWARE KITCHEN TAPWARE KITCHEN TAPWARE
KITCHEN TAPWARE KITCHEN TAPWARE KITCHEN TAPWA
HEN TAPWARE KITCHEN TAPWARE KITCHEN TAPWARE
KITCHEN TAPWARE KITCHEN TAPWARE KITCHEN TAP
WARE KITCHEN TAPWARE KITCHEN TAPWARE KITCHEN
TAPWARE KITCHEN TAPWARE KITCHEN TAPWARE KITCHEN
TAPWARE KITCHEN TAPWARE KITCHEN TAPWARE KITCHEN
EN TAPWARE KITCHEN TAPWARE KITCHEN TAPWARE KITCHEN
TAPWARE KITCHEN TAPWARE KITCHEN TAPWARE KITCHEN
EN TAPWARE KITCHEN TAPWARE KITCHEN TAPWARE KITCHEN
N TAPWARE KITCHEN TAPWARE KITCHEN TAPWARE KITCHEN
TAPWARE KITCHEN TAPWARE KITCHEN TAPWARE KITCHEN TAP
WARE KITCHEN TAPWARE KITCHEN TAPWARE KITCHEN TAPWARE
KITCHEN TAPWARE KITCHEN TAPWARE KITCHEN TAPWARE KITCHEN
TAPWARE KITCHEN TAPWARE KITCHEN TAPWARE KITCHEN TAPWARE
KITCHEN TAPWARE KITCHEN TAPWARE KITCHEN TAPWARE KITCHEN TAPWARE
KITCHEN TAPWARE KITCHEN TAPWARE KITCHEN TAPWARE KITCHEN TAPWARE
ARE KITCHEN TAPWARE KITCHEN TAPWARE KITCHEN TAPWARE
TAPWARE KITCHEN TAPWARE KITCHEN TAPWARE KITCHEN TAPWARE
WARE KITCHEN TAPWARE KITCHEN TAPWARE KITCHEN TAPWARE KITCHEN

KITCHEN TAPWARE



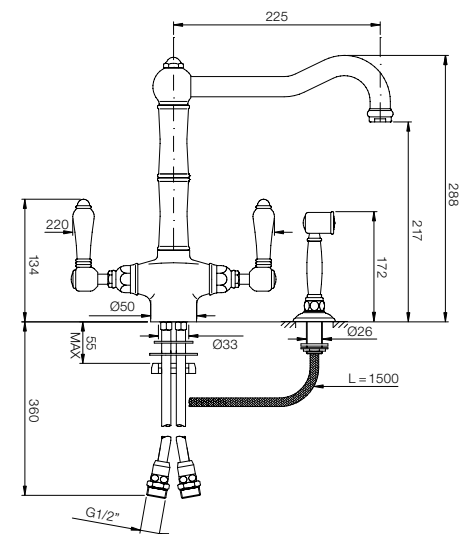
MONOBLOC SINGLE HOLE MIXERS

1406 Single hole kitchen sink mixer with traditional style swivel spout



Maximum bench thickness: 55mm
Recommended hole size: 34mm Ø

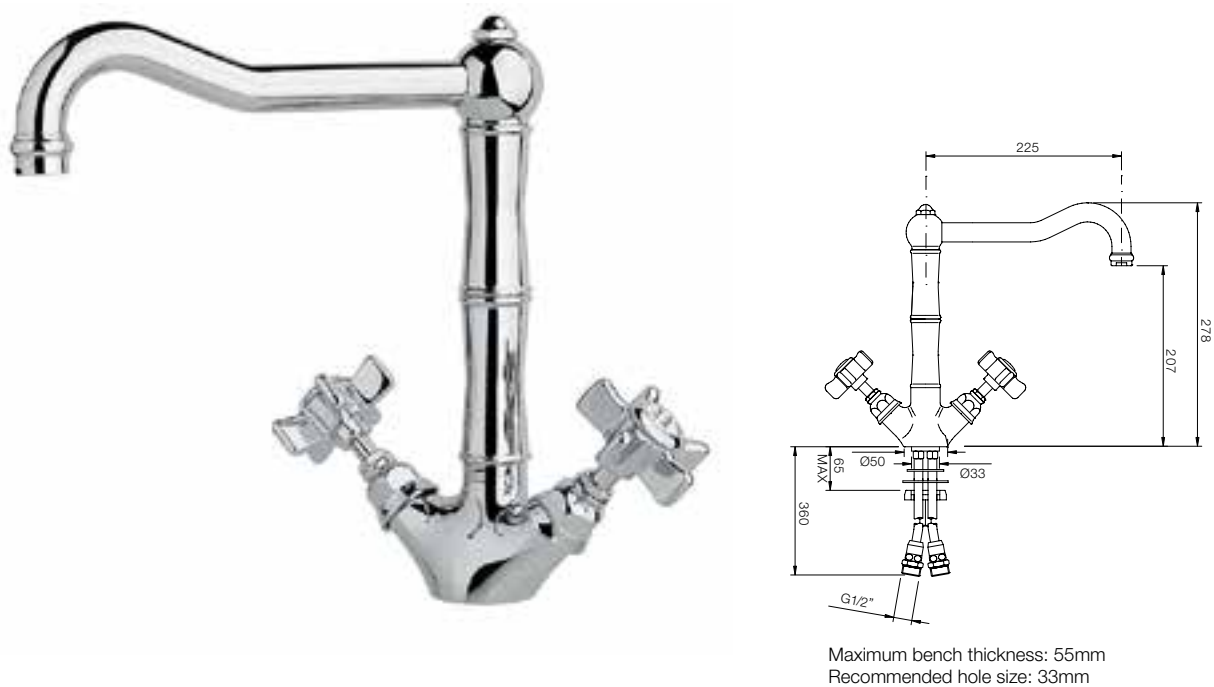
1406WS Single hole kitchen sink mixer with traditional style swivel spout & separate hand spray



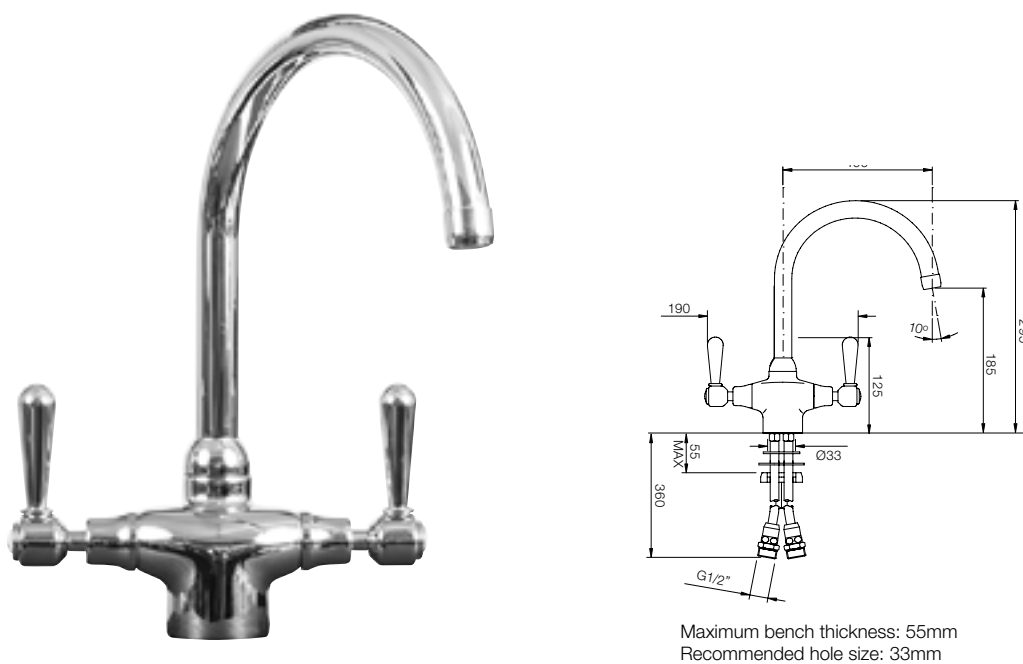
Maximum bench thickness: 54mm
Recommended hole size: 34mm Ø (mixer)
& 26mm Ø (rinse spray)

Options: Colour choice on page 2 & Handles on page 59. Handspray only sold with tap, NOT sold separately.

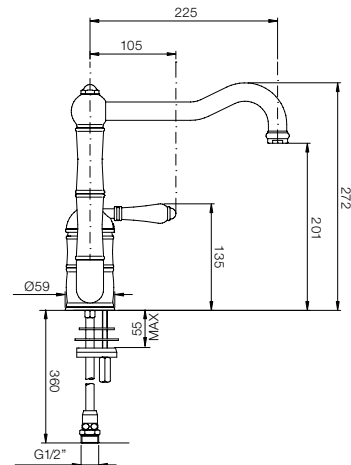
1469 Single hole kitchen sink mixer with traditional style swivel spout



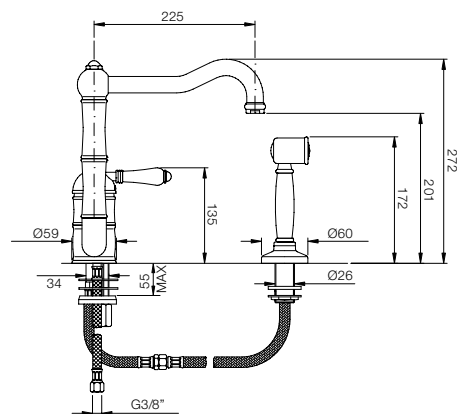
2606 Single hole kitchen sink mixer with goose neck swivel spout



3407 Single hole lever kitchen sink mixer with off-set traditional swivel spout

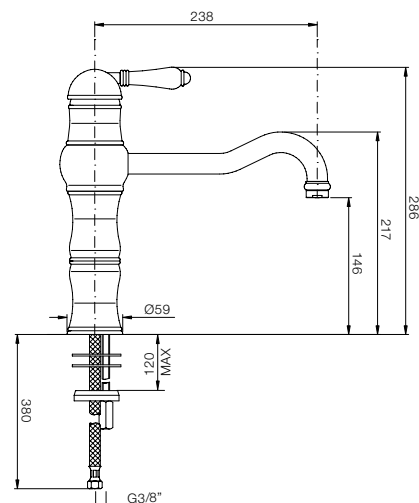


3407WS Single hole lever kitchen sink mixer with off-set traditional swivel spout & separate hand spray

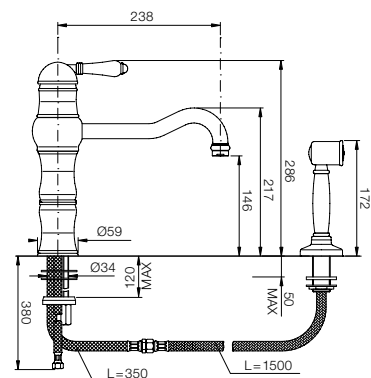


Options: Colour choice on page 2 & Handles on page 59. Handspray only sold with tap, NOT sold separately.

3479 Single hole lever kitchen sink mixer with traditional swivel spout



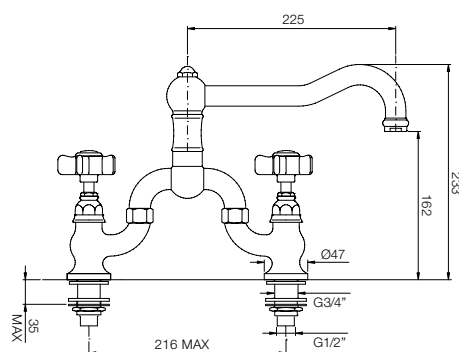
3479WS Single hole lever kitchen sink mixer with traditional swivel spout & separate hand spray



Options: Colour choice on page 2 & Handles on page 59. Handspray only sold with tap, NOT sold separately.

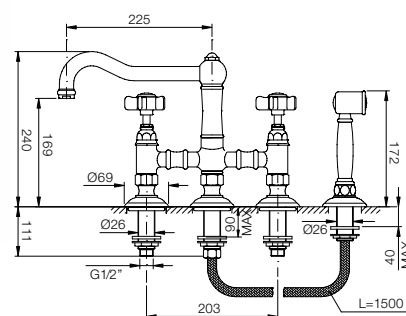
DECK MOUNTED MIXERS

1420 Two-hole French Provincial bridge kitchen sink mixer with traditional swivel spout



Maximum bench thickness: 35mm
Recommended hole size: 20mm

1458WS Three-hole bridge kitchen sink mixer with traditional swivel spout & separate hand spray *

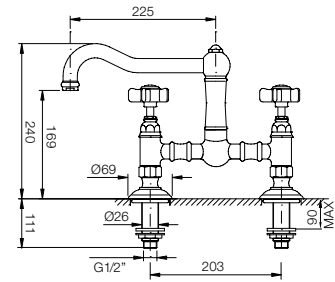


Maximum bench thickness: 54mm
Recommended hole size: 26mm

Options: Colour choice on page 2 & Handles on page 59. Handspray only sold with tap, NOT sold separately.

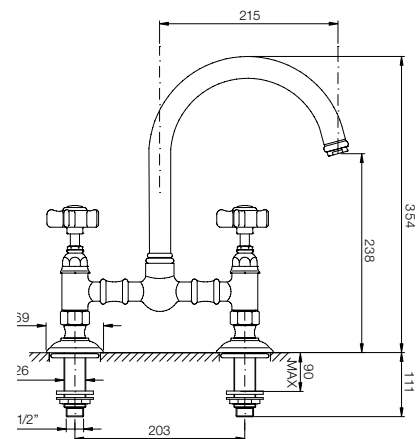
* Available with straight legs only

1459 Two-hole bridge kitchen sink mixer with traditional swivel spout*



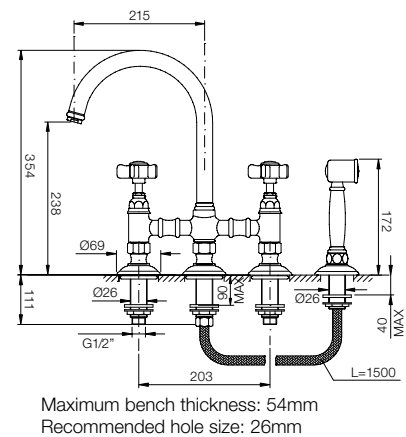
Maximum bench thickness: 90mm
Recommended hole size: 26mm

1460 Two-hole bridge kitchen sink mixer with goose neck swivel spout*



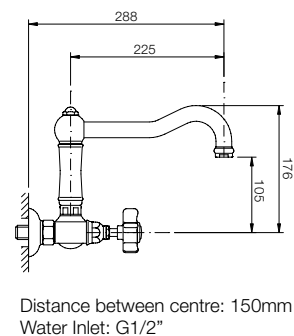
Maximum bench thickness: 90mm
Recommended hole size: 26mm

1460WS Three-hole bridge kitchen sink mixer with goose neck swivel spout & separate hand spray*



WALL MOUNTED MIXER

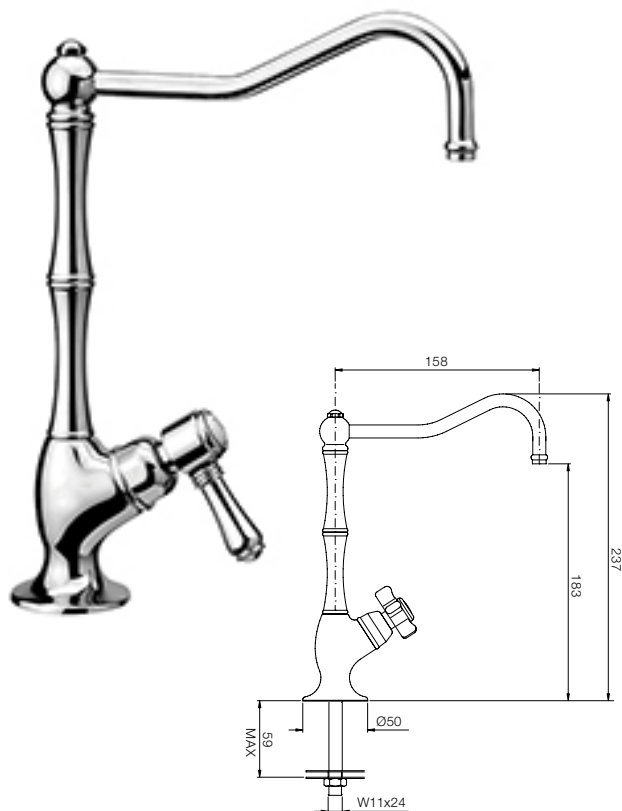
1457 Wall mounted kitchen sink mixer with traditional swivel spout



Options: Colour choice on page 2 & Handles on page 59. Handspray only sold with tap, NOT sold separately.
*Comes with straight legs only, off-set legs available as special order.

DECK MOUNTED KITCHEN FILTER TAP

1435 Filter tap with traditional spout



Maximum bench thickness: 59mm
Recommended hole size: 12mm

1635 Filter tap with goose neck spout



Maximum bench thickness: 59mm
Recommended hole size: 12mm

Mini Handle Collection (for water filter taps only)



8 Mini Half Dome*



12 Mini Petit Mont Blanc*



13 Mini Dames Anglaises*

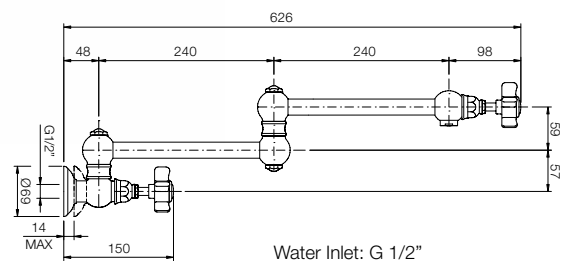


11 Mini El Capitan*

Water filtration unit (image not shown) requires installation under sink in cabinet. Filter itself requires replacement every 12 months on average depending on the viscosity of water supply.

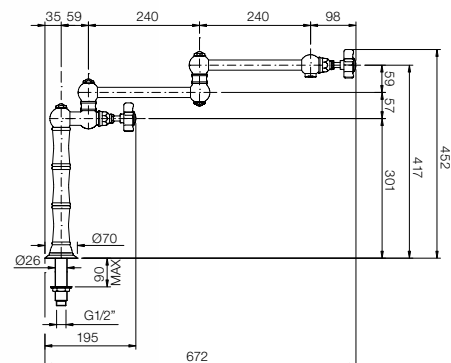
WALL MOUNTED KITCHEN POT FILLER

1451 Wall mounted pot filler with swivel arm spout



DECK MOUNTED POT FILLER

1452 Deck mounted pot filler with swivel arm spout



TAPWARE BATHROOM TAPWARE BATHROOM TAPWARE
BATHROOM TAPWARE BATHROOM TAPWARE
BATHROOM TAPWARE BATHROOM TAPWARE BATHROOM TAP
WARE BATHROOM TAPWARE BATHROOM TAPWARE BATH
ROOM TAPWARE ROOM TAPWARE BATHROOM TAP
WARE BATHROOM TAPWARE BATHROOM TAPWARE
BATHROOM TAPWARE BATHROOM TAPWARE BATHROOM
TAPWARE BATHROOM TAPWARE BATHROOM TAP
WARE BATHROOM TAPWARE BATHROOM TAPWARE
BATHROOM TAPWARE ROOM TAPWARE BATHROOM TAPW
ARE BATHROOM TAPWARE BATHROOM TAPWARE
BATHROOM TAPWARE BATHROOM TAPWARE BATHROOM TAP
WARE BATHROOM TAPWARE BATHROOM TAP
ROOM TAPWARE BATHROOM TAPWARE BATHROOM TAP
WARE BATHROOM TAPE BATHROOM TAPWARE BATHROOM
TAPWARE BATHROOM TAPWARE BATHRO
OM TAPWARE BATHROOM TAPWARE BATHROOM TAPWARE BATH
ROOM TAPWARE BATHROOM TAPWARE BATHROOM
TAPWARE BATHROOM TAPWARE BATHROOM TAPW
ARE BATHROOM TAPWARE BATHROOM TAPWARE BATH
ROOM TAPWARE BATHROOM TAPWARE BATHROOM TAP
WARE BATHROOM TAPWARE BATHROOM TAPWARE BATH
ROOM TAPWARE BATHROOM TAPWARE BATHROOM
TAPWARE BATHROOM TAPWARE BATHROOM

BATHROOM TAPWARE

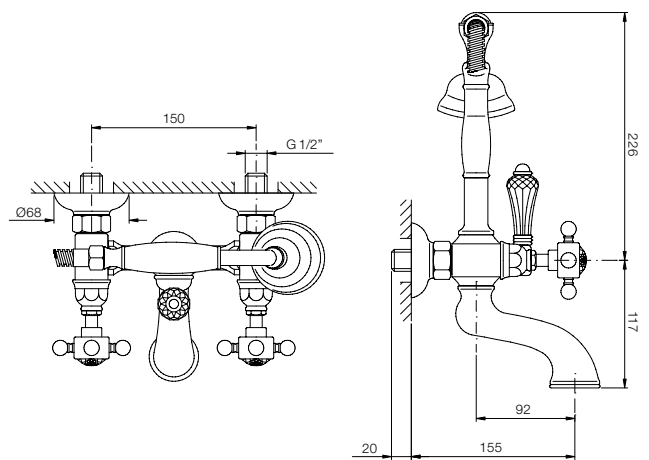


BATHTUB FILLERS

1401 Wall mounted bathtub classic style filler

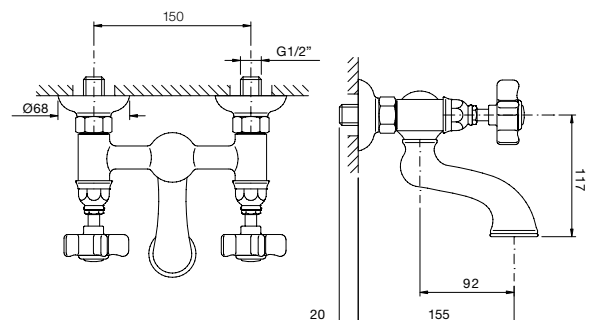
(can also be floor-standing or deck mounted, see page 22 for details)

Please note: Middle handle MUST be a lever. Shower option is metal or ceramic



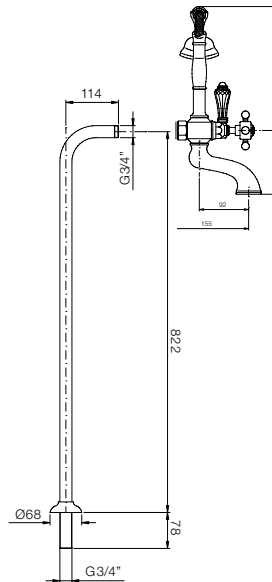
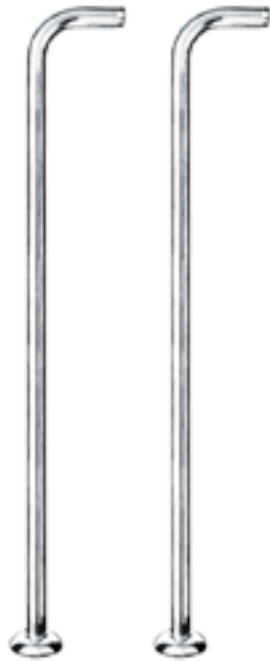
1441 Wall mounted bathtub classic style filler

(can also be floor-standing or deck mounted, see page 22 for details)



Options: Colour choice on page 2 & Handles on page 59

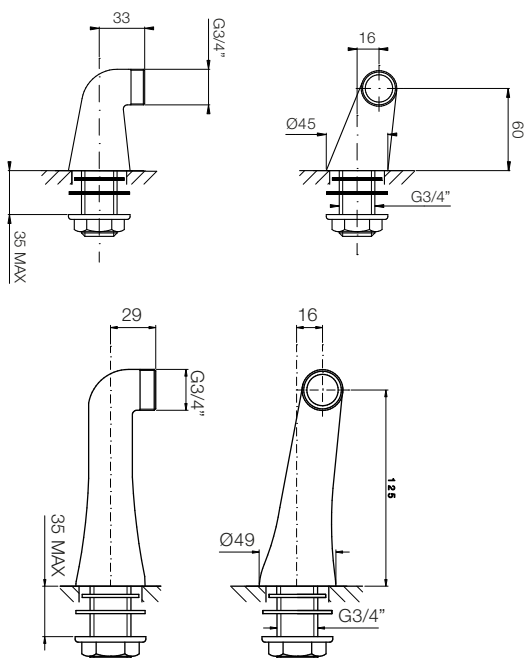
5574 Pair of chromed vertical stand pipes (with base plate) to convert 1401 & 1441 to freestanding floor mounted bathfiller.



Floor mounted free standing bath filler

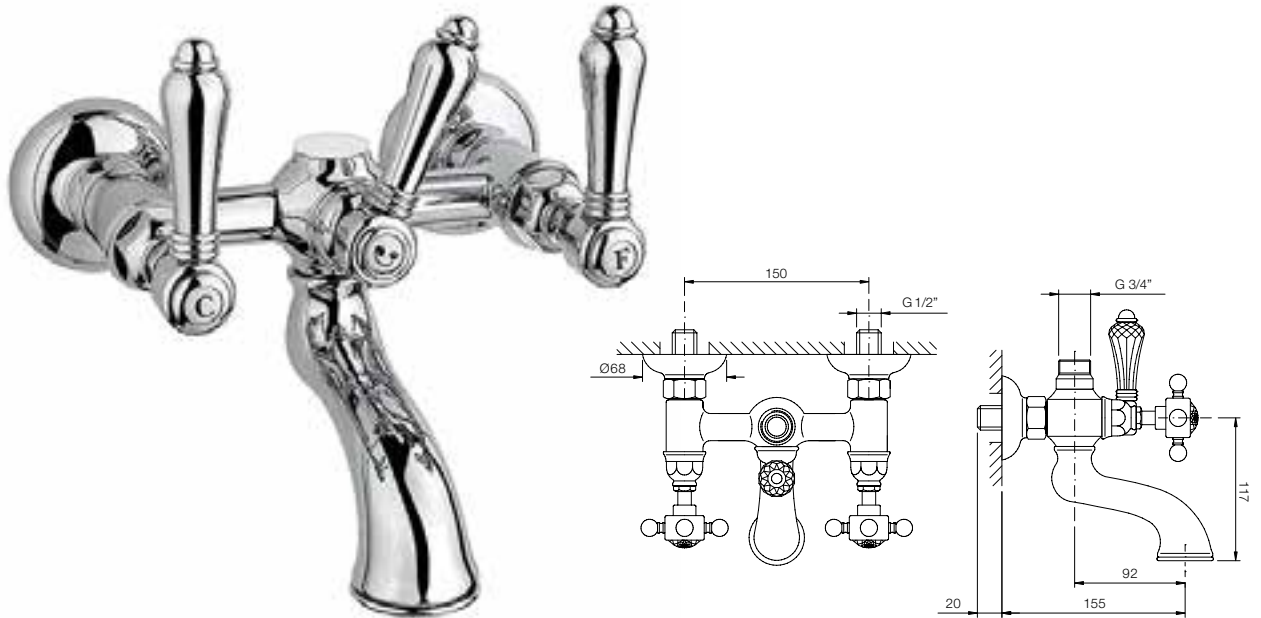


Deck mounted leg sets **5576** and **5576L** for mounting onto bath, stone or tiled ledge. Available in two heights: 5576 - 70mm & 5576L - 120mm (height set from deck to centre of leg aperture).



1400 Wall mounted bathtub filler & column shower mixer

Please note: Middle handle **MUST** be a lever
See page 36-40 for shower options.



DECK MOUNTED BATH FILLERS

1449 Deck mounted four-hole traditional style bathtub mixer set with separate hand spray

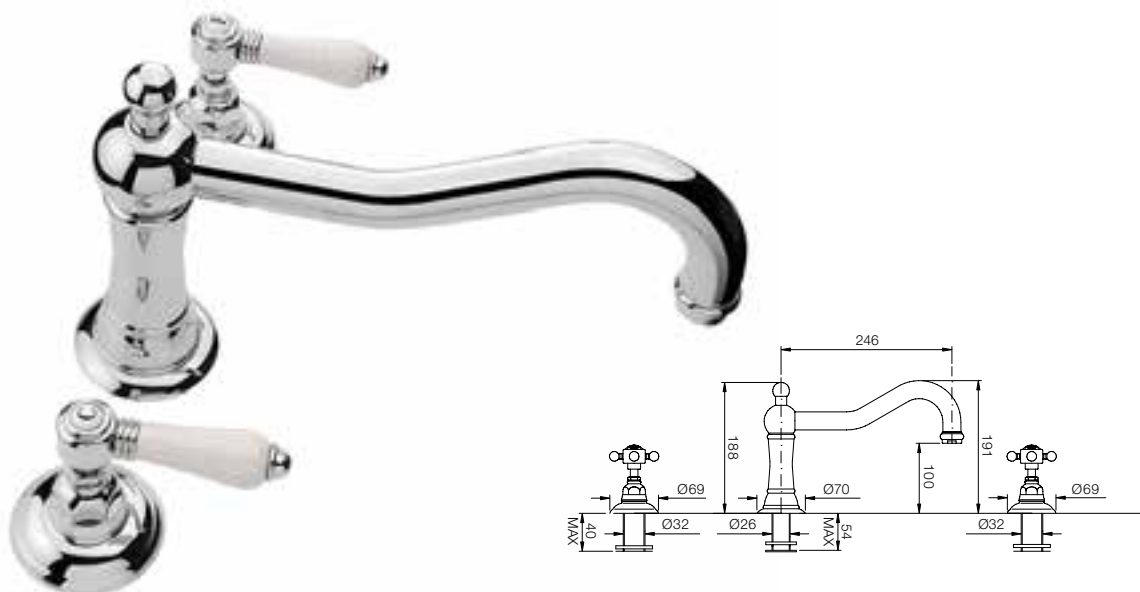


Options: Colour choice on page 2 & Handles on page 59

1404 Deck mounted four-hole classic smooth style bathtub mixer set with separate hand spray



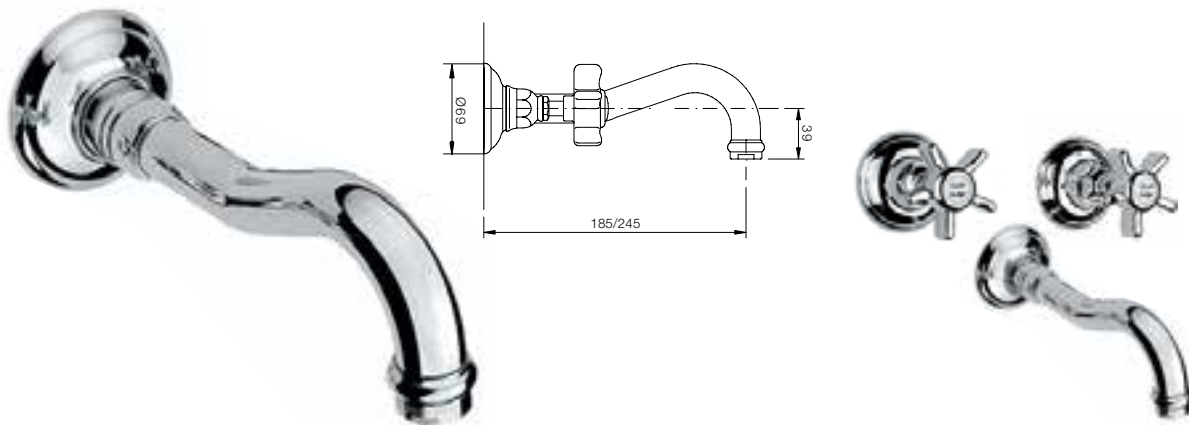
1439 Deck mounted traditional style three-hole bathtub mixer set with separate hand spray



WALL MOUNTED BATH FILLERS

C1477/C1478 Bath filler traditional style spout - 185/245mm in length

(can be combined with 2 x 1412 wall valve, see page 26 or with 3406/3460 concealed mixer valve, see page 42)



C2503 Bath filler classic smooth spout - 160mm in length

(can be combined with 2 x 1412 wall valve or 3406/3460 concealed mixer valve see page 42/43)



CONCEALED BATH & SHOWER FILLER MIXER VALVE OPTIONS

3406 Single lever concealed shower mixer valve & finished set (see pages 42/43)

(combines with concealed wall valve C4006)



3460 Single lever concealed shower mixer valve with **diverter** & finished set (see pages 42/43)

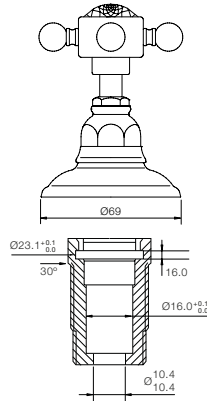
(combines with concealed wall valve C4060)



BATHTUB FILLERS

1412 Deck/wall mounted hot or cold valve/stop cock

(suitable for either lever or cross handles (see page 57 for handle collection)



Example below is a 1412 + C2503 Composition Set which comprises of 2 x 1412 wall/deck valves + C2503 wall mounted bath spout & shows the 1412 valve as a wall option which can be used for bath, basin or shower control (for shower options see pages 36 through to 45).

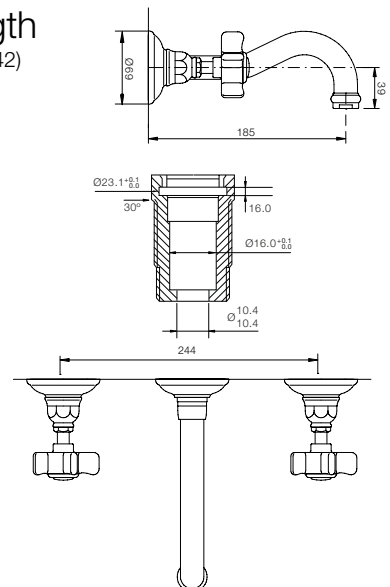


Example below is a 1409 washbasin mixer set to show the 1412 valves as a deck option.



1477 Bath filler traditional style spout - 185mm in length

(can be combined with 2 x 1412 wall valve or 3406/3460 concealed mixer valve, see page 42)

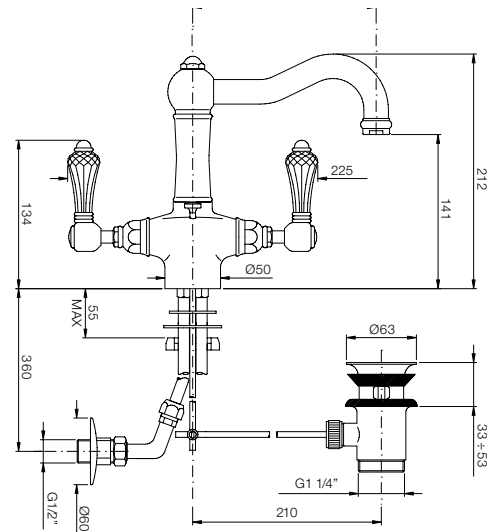


Options: Colour choice on page 2 & Handles on page 59

MONOBLOC BASIN MIXERS

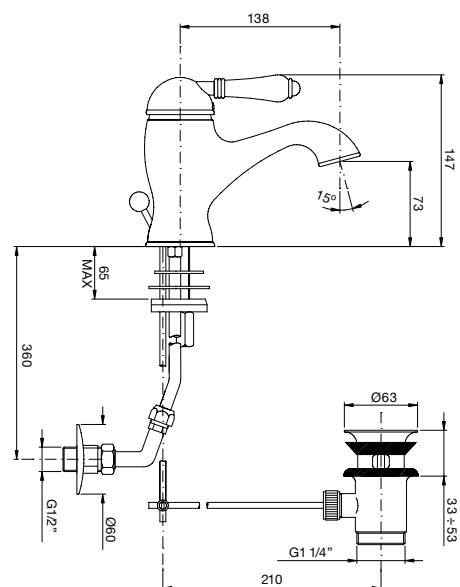
1432T Single hole basin mixer with traditional spout

(with automatic pop-up waste)

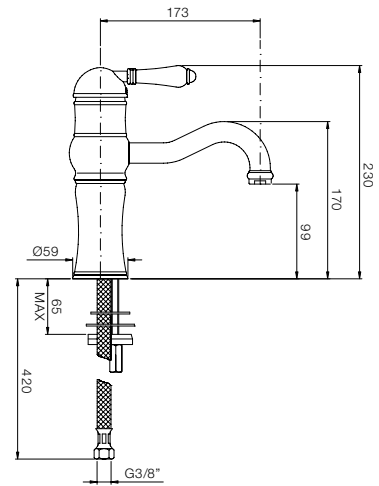


3402 Single hole basin mixer with classic smooth spout

(with automatic pop-up waste)

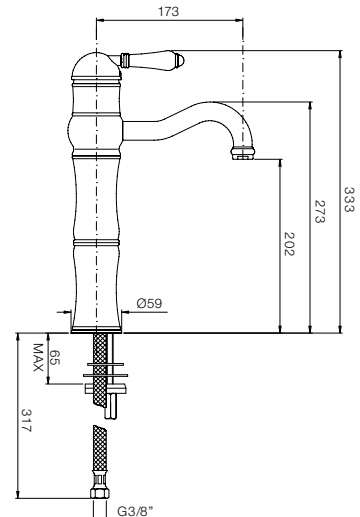


3471 Single hole basin mixer with traditional spout



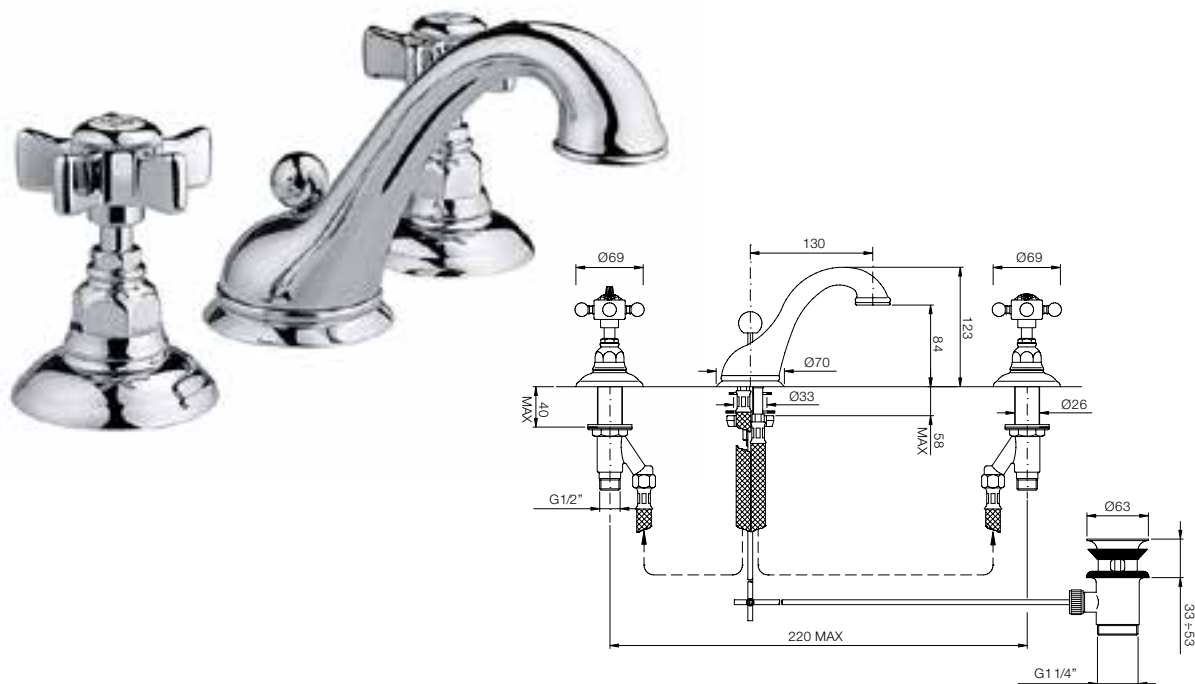
3472 Single hole tall basin mixer with traditional spout

(suitable for counter-top washbasin)

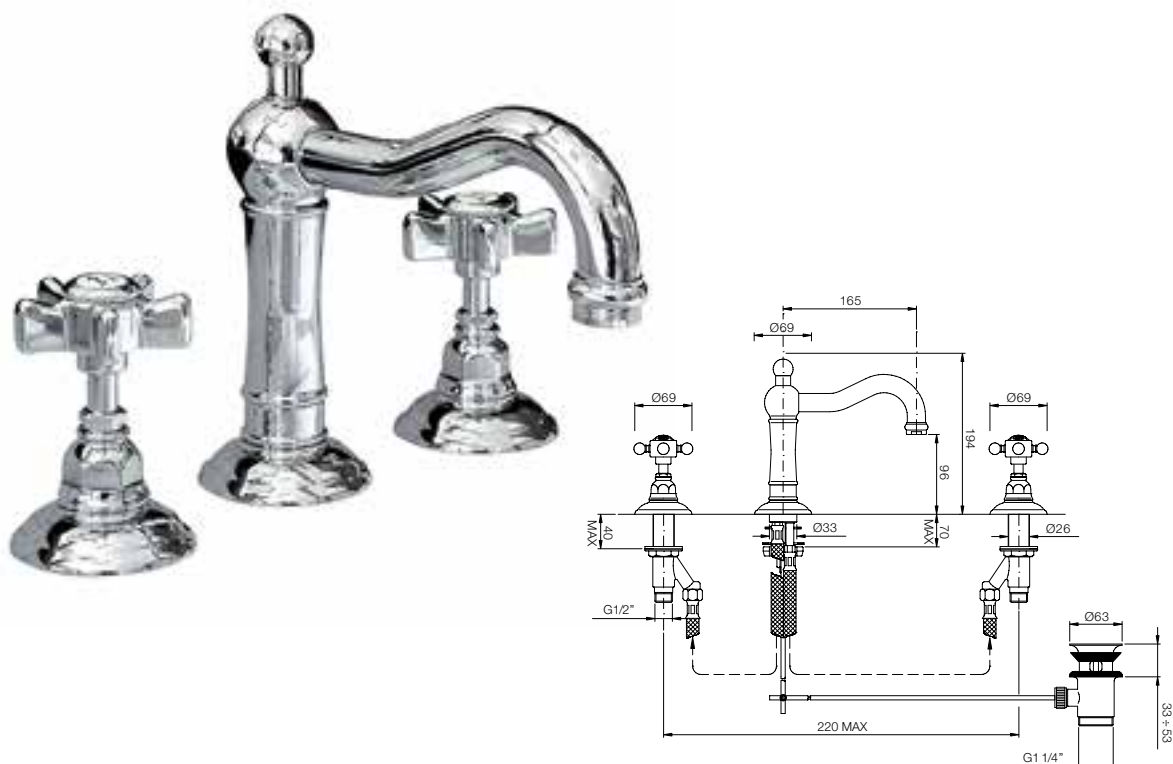


DECK MOUNTED BASIN MIXERS

1408 Deck mounted wash basin mixer with automatic pop-up waste



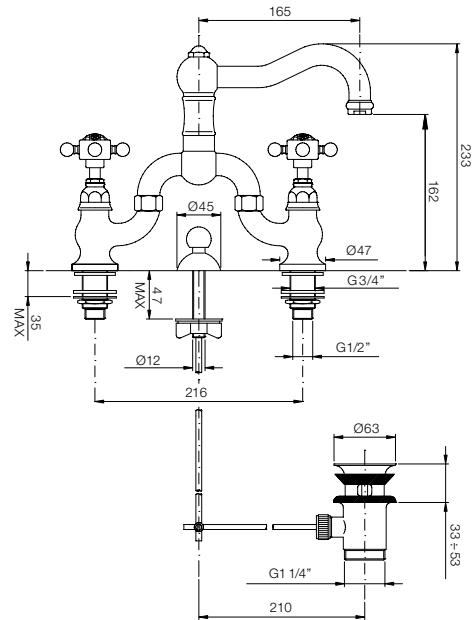
1409 Deck mounted traditional style wash basin mixer with automatic pop-up waste



Options: Colour choice on page 2 & Handles on page 59

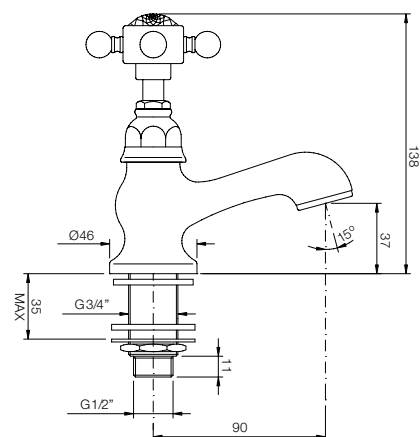
DECK MOUNTED BASIN MIXER

1419 Bridge mixer with pop-up waste



1417 Basin pillar tap

(sold separately as hot & cold taps)



ART DECO

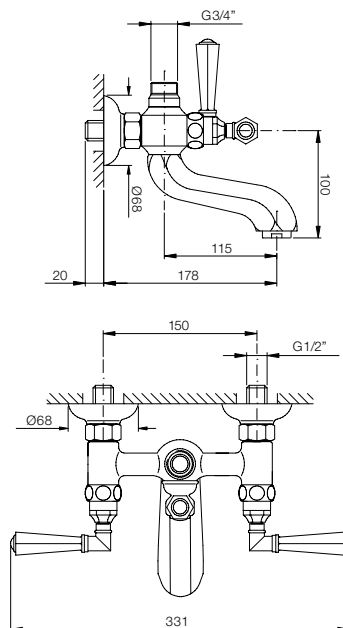


ART DECO RANGE

1900 Wall mounted bathtub ART DECO style filler with cradle hand shower

(see pages 36 through to 45 for shower options)

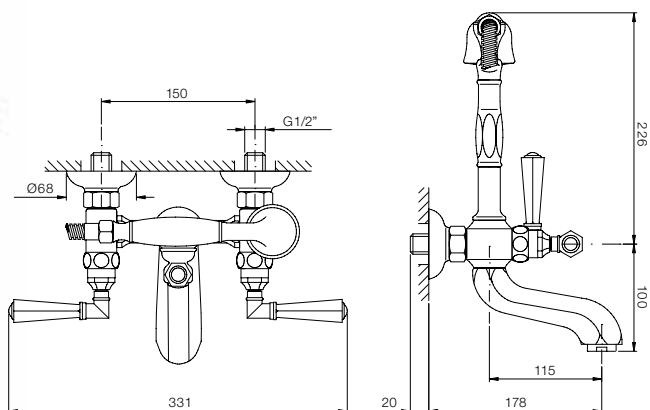
Please note: Middle handle MUST be a lever. Hand shower option is metal only on this model



1901 Wall mounted bathtub ART DECO style filler with cradle hand shower

(can also be used as a floor-standing arrangement, see page 22 for details)

Please note: Middle handle MUST be a lever. Shower option is metal



1912 + C1803 Wall mounted ART DECO bath filler set

(comprises of 1912 vale & C1803 Deck/wall mounted hot or cold valve)



1904 Deck mounted ART DECO four-hole bathtub mixer set with separate hand spray



Options: Colour choice on page 2 & Handles on page 59

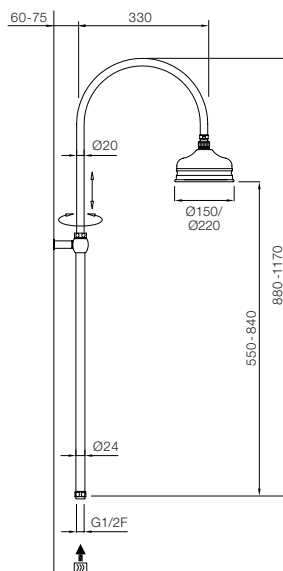
SHOWER RANGE



SHOWER COLUMN WITH SHOWER HEAD

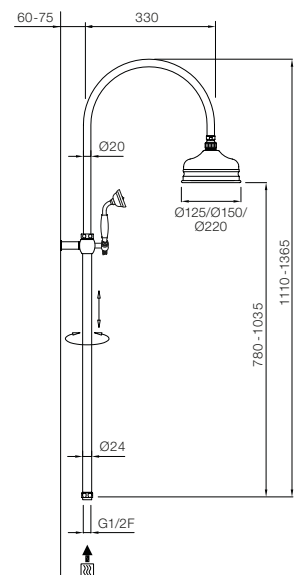
5-30025 Shower column with cannister shower head (requires shower control see page 37 for options)

Sizes: 150mm, 200mm & 300mm diameter



5-30226 Shower column with cannister shower head, complete with hand shower, adjustable bracket & integral diverter (requires shower control see page 38 for options)

Sizes: 150mm, 200mm & 300mm diameter

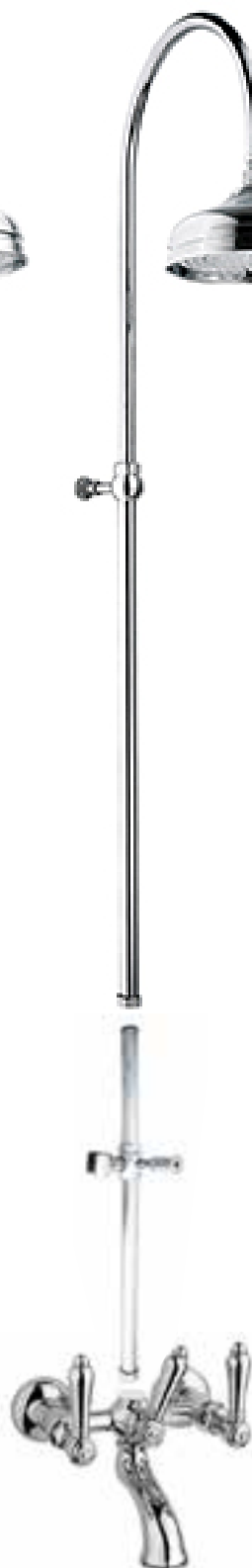


5-30025 Column shower combination options

A



B



C



D



A. 5-30025 + 1425

B. 5-30025 + 5-20830C50 + 1400

C. 5-30025 + 5-33630 + 3406

D. 5-30025 + 5-33630 + 2 x 1412

5-30226 Column shower combination options

X

Y

Z



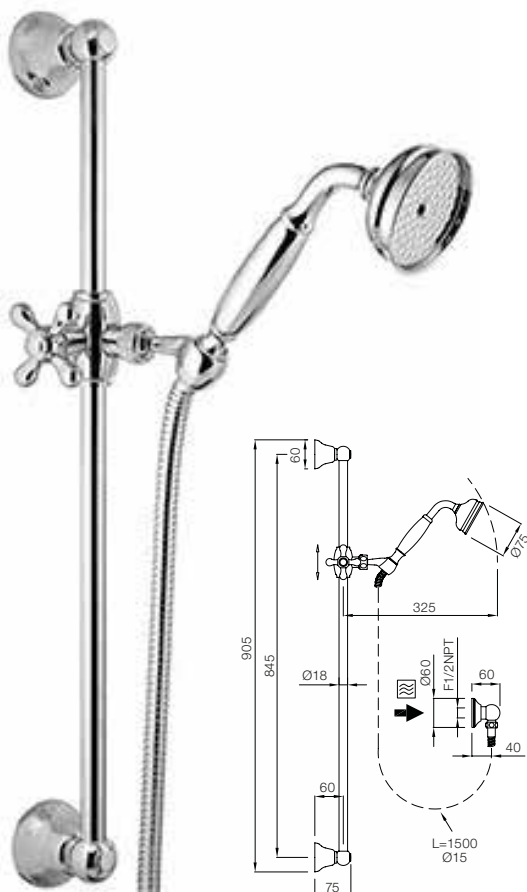
X. 5-30226 + 5-33630 + 3406/4006

Y. 5-30226 + 5-33630 + 1412

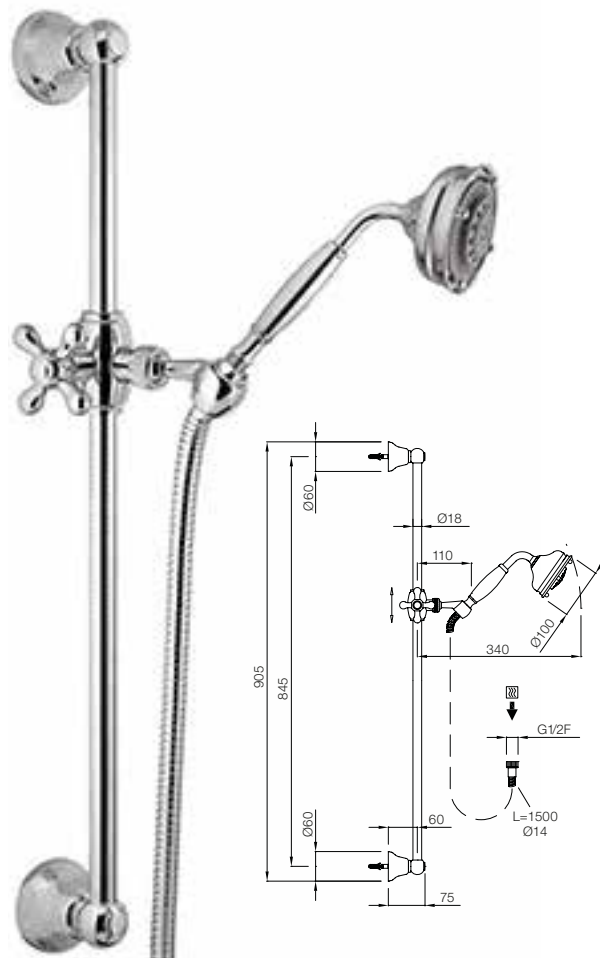
Z. 5-30226 + 1425 + 5-20830CSO/SFE

COLONIAL BRASS SLIDING SHOWER RAIL

5-84202-RES Colonial brass sliding rail



5-84500-RES Colonial brass sliding rail with 5 Jets



5-33630



Concealed combination

OPTION 1

for **5-84302**
or **584500**

3406



or

1412



Wall mounted combination

OPTION 2

for **5-84202**
or **584500**

1425



5-84202 RES Traditional sliding rail incorporating adjustable handshower with standard head. Suggested combinations to operate the shower are:

OPTION 1: 5-33630/SC wall connection + 3460 concealed lever wall mixer valve (page 42).

Or 1412 wall valves (Page 26).

OPTION 2: 1400 Wall mounted bath filler with diverter (page 41)

Or 1425 Wall mounted shower mixer.

5-84500-RES Traditional sliding rail incorporating adjustable handshower with 5-Jet head. Suggested combinations to operate the shower are:

OPTION 1: 5-33630/SC wall connection + 3460 concealed lever wall mixer valve (page 42).

Or 1412 wall valves (Page 26).

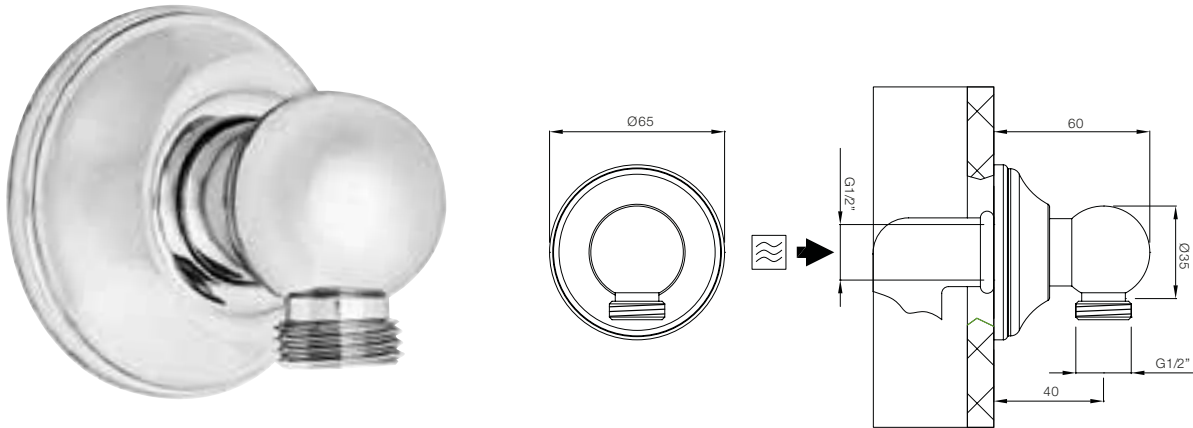
OPTION 2: 1425 Wall mounted shower mixer.

Options: Colour choice on page 2 & Handles on page 59

SHOWER COLUMN/WALL CONNECTION

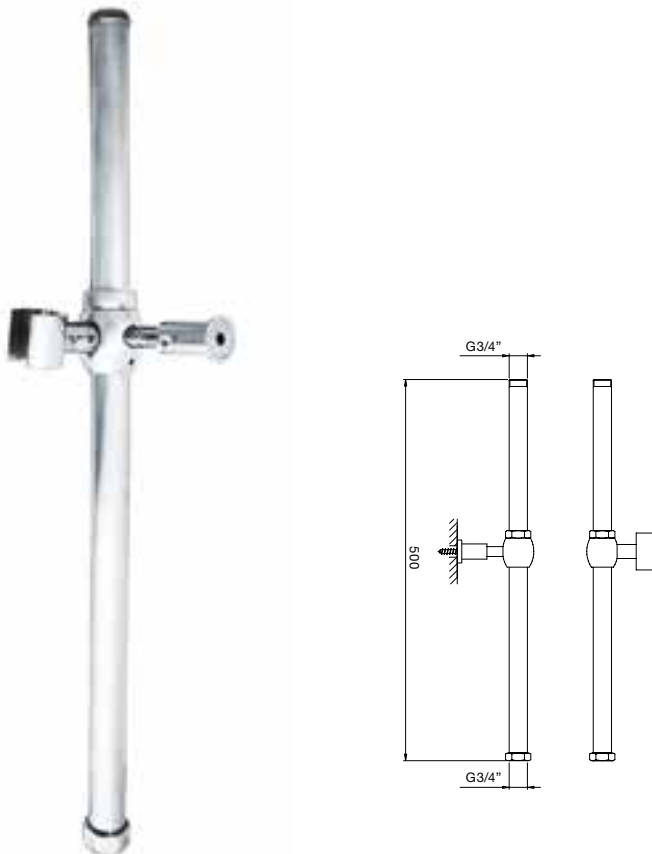
5-33630/SC Wall mounted connection for shower columns & hoses

(see pages 37/38/39 for combination options)



5-20830C50 Shower column extension

(for use with 5-30025 or 5-30026 when combined with 1400 wall mounted bath filler)

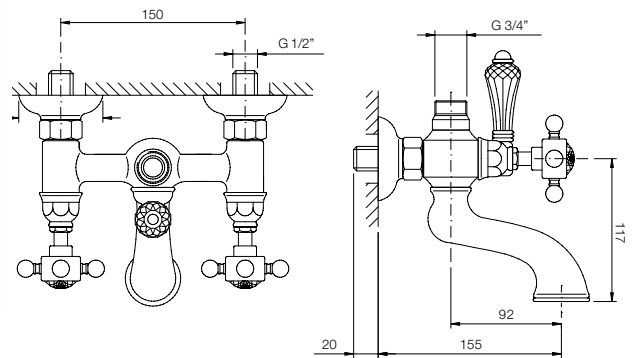


Options: Colour choice on page 2

SHOWER & BATH FILLER MIXER OPTIONS

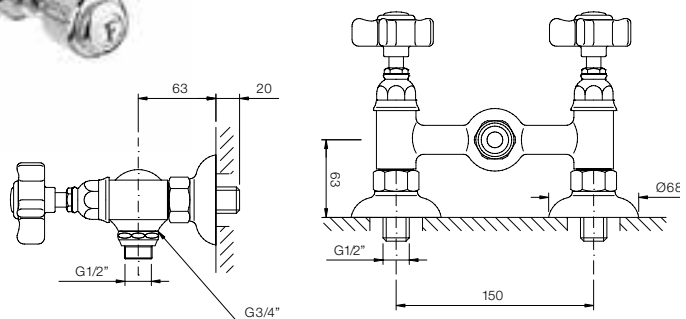
1400 Bathtub set for column shower

Please note: Middle handle MUST be a lever.
See page 36/37/38 for shower options



1425 Wall mounted shower mixer only

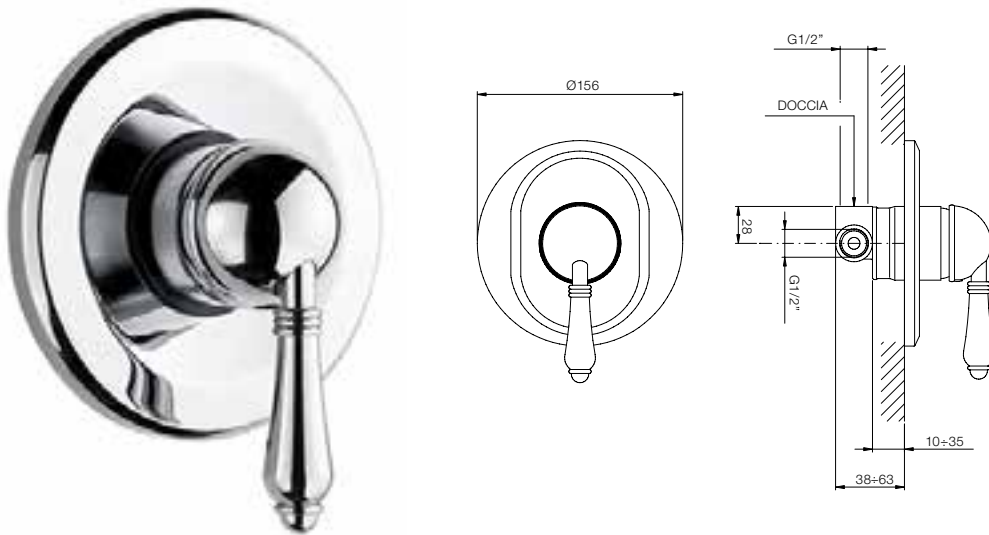
See page 36/37/38 for shower options



CONCEALED SHOWER & BATH FILLER MIXER VALVE OPTIONS

3406 Single lever concealed shower mixer valve & finished set

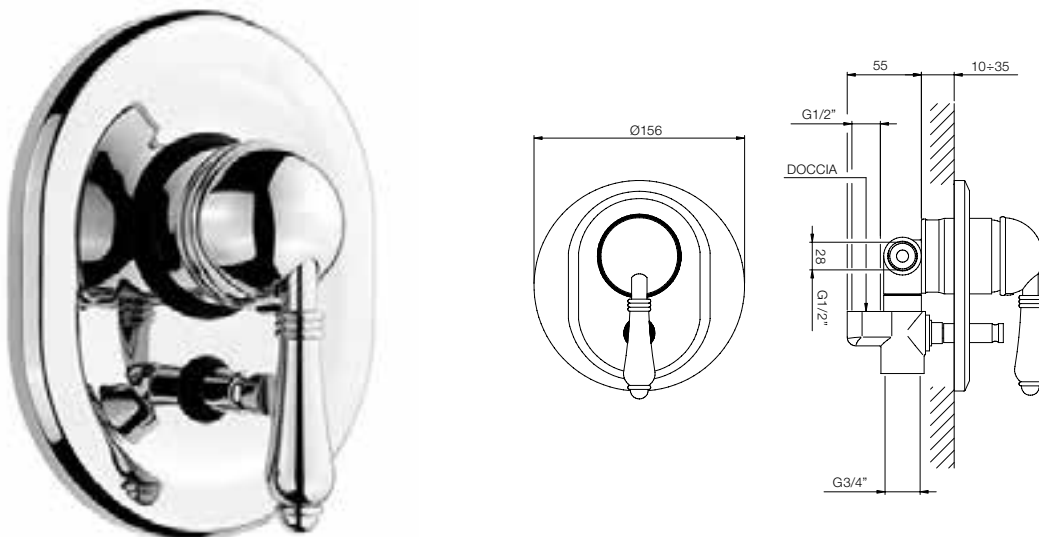
(combines with concealed wall valve C4060)



3460 Single lever concealed shower mixer valve with **diverter** & finished set

(combines with concealed wall valve C4060).

For shower combination options see page 43

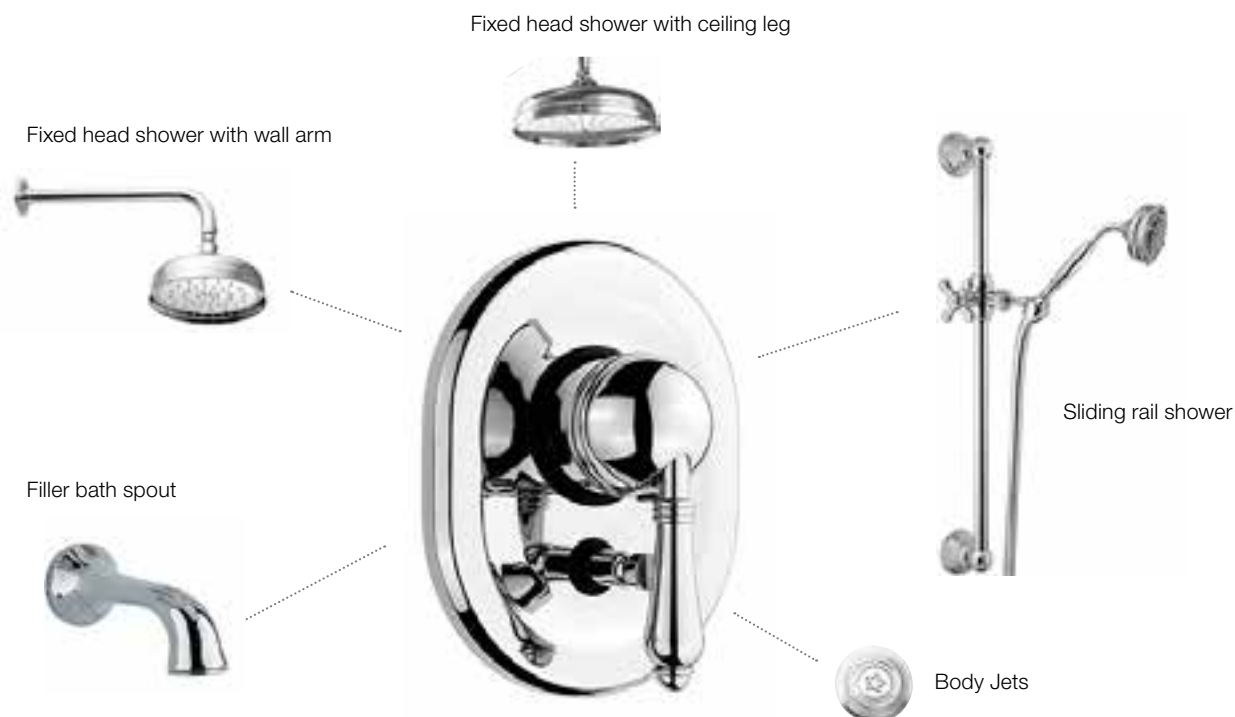


Combinations for **3406** single lever concealed shower mixer



CHOOSE ANY ONE OF THESE OPTIONS

Combinations for **3460** single lever concealed shower mixer with diverter



CHOOSE ANY TWO OF THESE OPTIONS

FIXED SHOWER HEADS, ARMS & LEGS

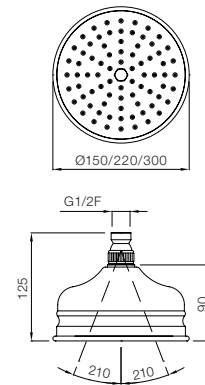
Canister shower head with modest swivel

(can be used on ceiling leg or wall arm)

5-23015 - 150mm Head

5-23921 - 220mm Head

5-23030 - 300mm Head



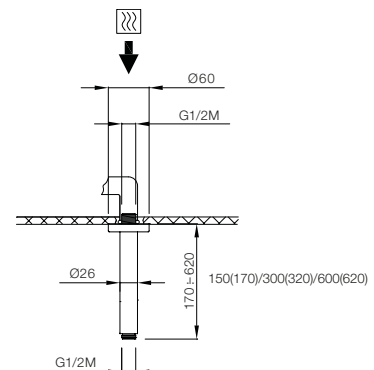
Ceiling legs

(for combination with shower head)

5-20126C15 - 150mm Leg

5-20126C30 - 300mm Leg

5-20126C60 - 600mm Leg



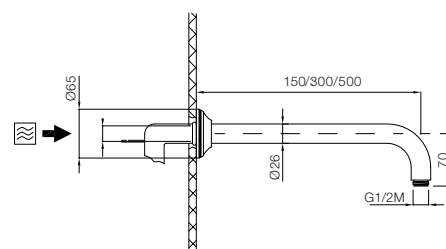
Wall arms

(for combination with shower head)

5-20026C15 150mm Arm

5-20026C30 300mm Arm

5-20026C50 500mm Arm



FIXED SHOWER HEADS, ARMS & LEGS (cont)

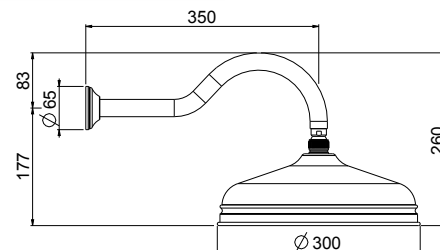
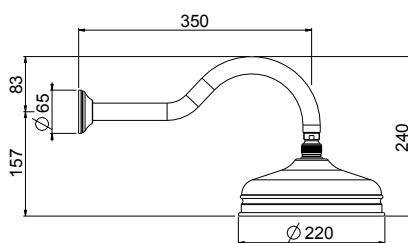
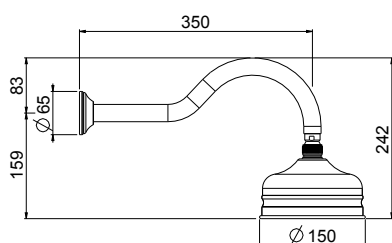
Traditional wall arm with canister shower head with modest swivel

(can be used on ceiling leg or wall arm)

5-23015 – 150mm Head

5-23921 – 220mm Head

5-23030 – 300mm Head



Ceiling leg & head



Standard arm & head



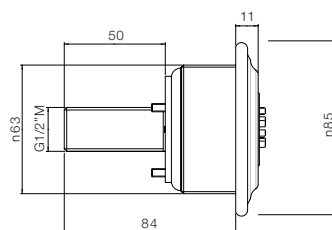
Traditional arm & head



BODY JET(S)

5-24980 Canterbury body jet

Wall mounted body jet(s) can be combined with 3460 Concealed mixer valve with diverter on Page 42 or 1412 wall valve(s) on page 26 to operate the body jet(s)



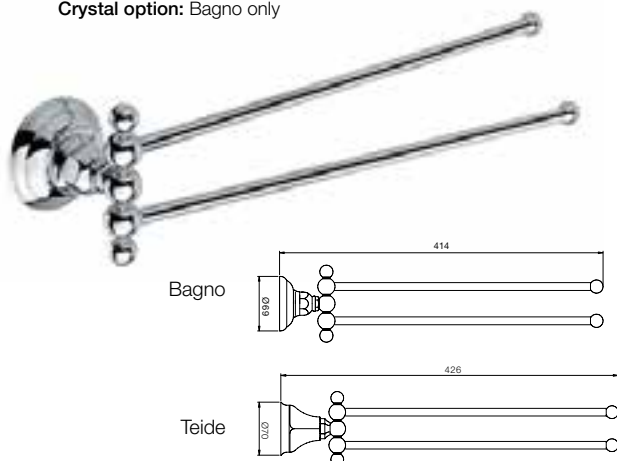
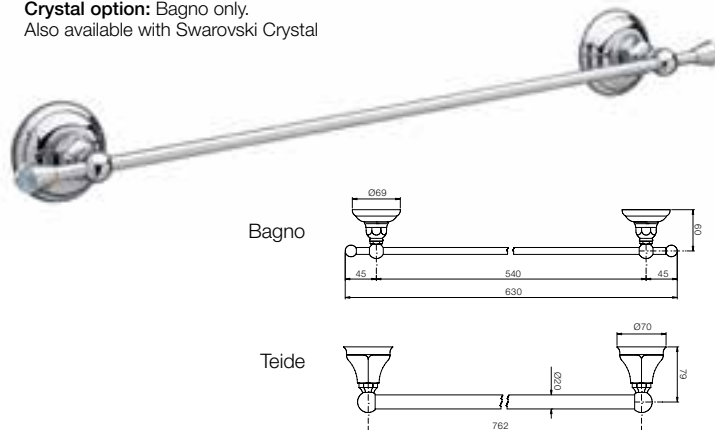
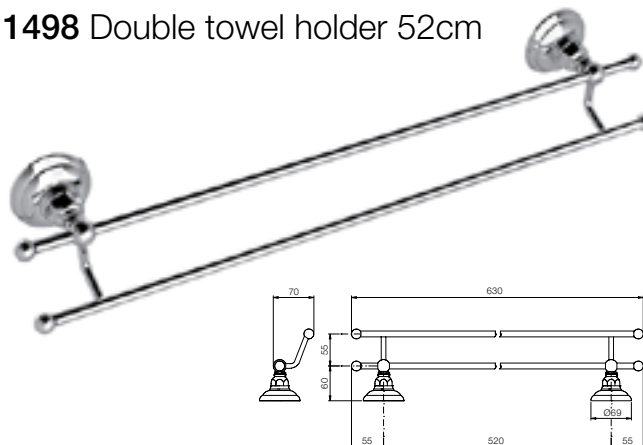
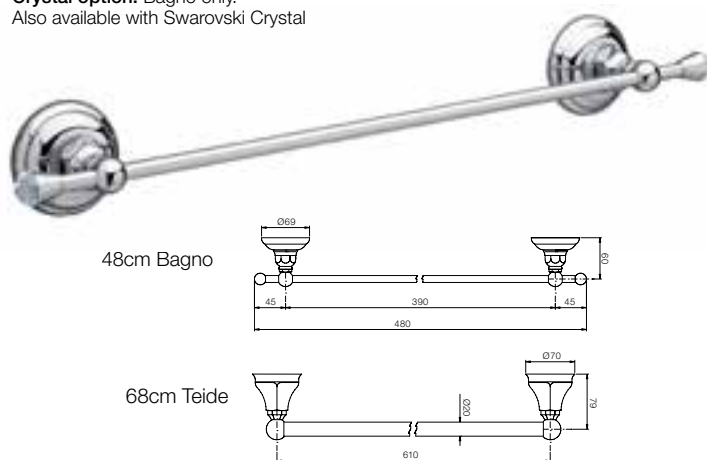
Options: Colour choice on page 2



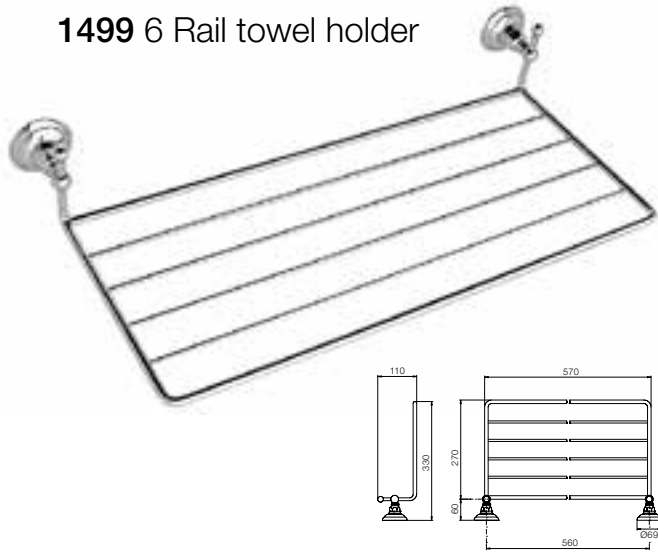
A word cloud featuring the word "ACCESSORIES" repeated in various sizes and orientations. The word is rendered in a clean, sans-serif font. One instance of the word is prominently displayed in white, centered horizontally and slightly above the middle vertically. All other instances of the word are in a light gray color. The gray words are scattered around the central white word, with some appearing larger and more frequent than others, creating a sense of depth and repetition. The background is a solid black, which makes the white and gray text stand out. The overall composition is minimalist and modern.

ACCESSORIES



1482 Slotted towel holder 43cm**Crystal option:** Bagno only**1486 Tower holder 60cm****Crystal option:** Bagno only.
Also available with Swarovski Crystal**1483 Tower holder****Crystal option:** Bagno only**1498 Double towel holder 52cm****1484 Tower holder****Crystal option:** Bagno only.
Also available with Swarovski Crystal**1485 Tower ring****Crystal option:** Bagno only

1499 6 Rail towel holder

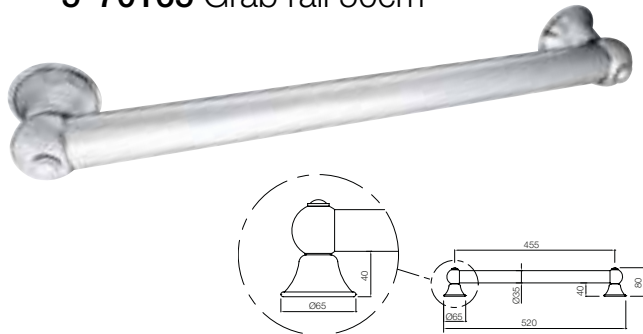


1480 Shelf

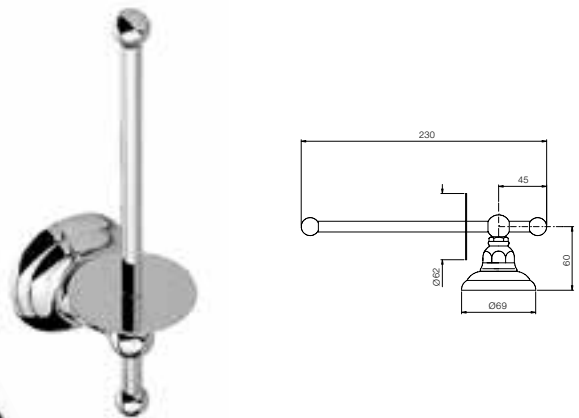
Crystal option: Bagno only



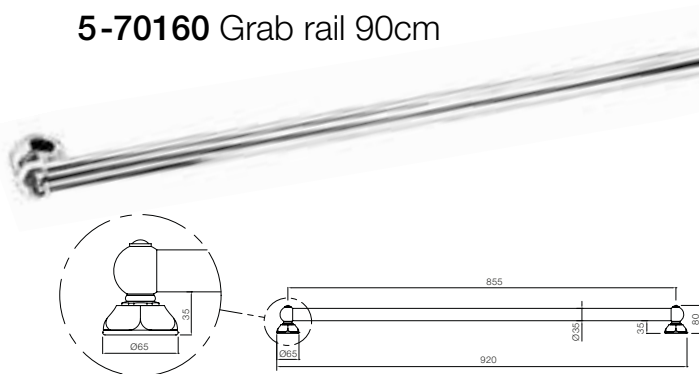
5-70165 Grab rail 50cm



1497 Spare paper holder



5-70160 Grab rail 90cm



1492S Paper holder

Crystal option: Bagno only

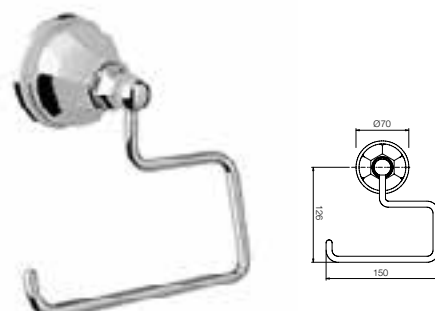


1492 Paper holder with cover

Crystal option: Bagno only



149405 Paper holder Tiede



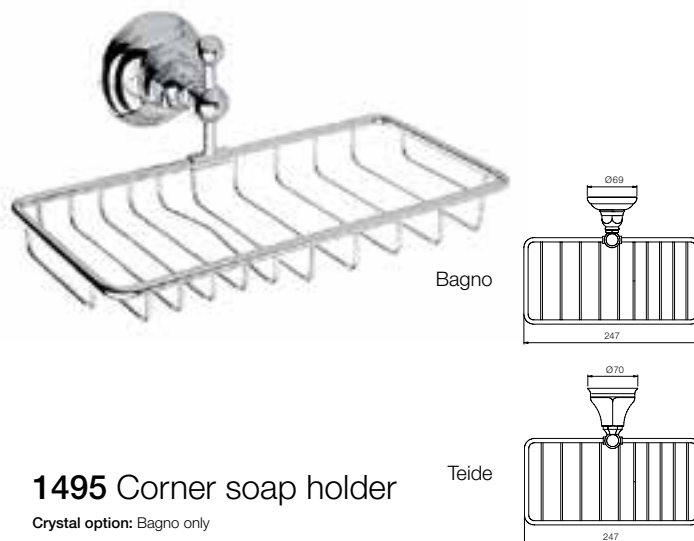
1488 Ceramic tumbler & holder

Available: white or antique ceramic



1493 Double soap holder

Crystal option: Bagno only



1489 Ceramic soap dispenser & holder

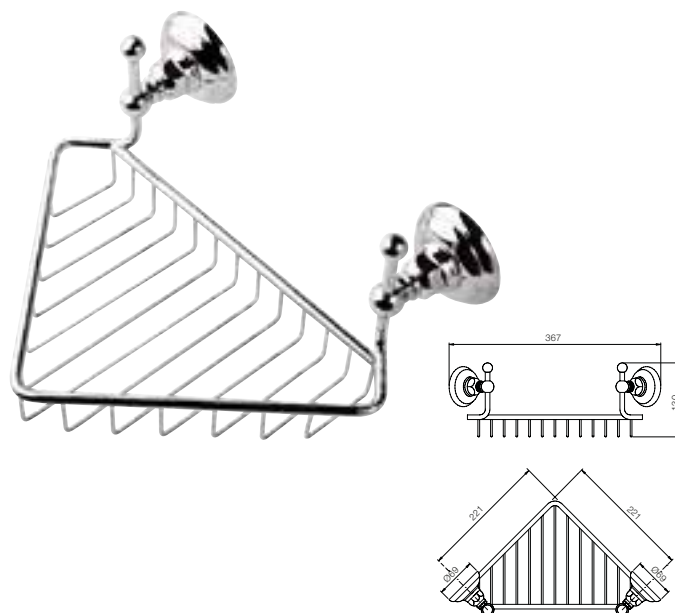
Crystal option: Bagno only.

Available: white or antique ceramic



1495 Corner soap holder

Crystal option: Bagno only



1494 Soap & tumbler holder

Available: white, antique or ceramic black



1487 Ceramic soap dish & holder

Crystal option: Bagno only.

Available: white or antique ceramic. Also available with Swarovski Crystal



6007 Soap dispenser



1491 Ceramic toilet brush container & brush with cover

Available: white or antique ceramic



LS850 Soap/lotion dispenser



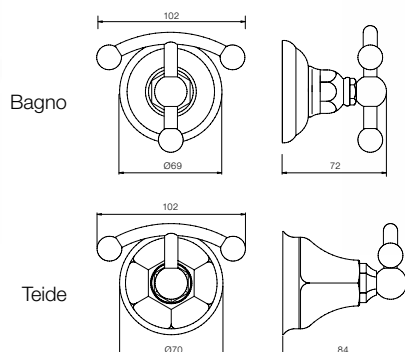
1490 Ceramic wall mounted toilet brush & holder

Crystal option: Bagno only.
Available: white or antique ceramic



1481 Clothes hanger

Crystal option: Bagno only





NICOLAZZI TAPWARE WARRANTY

This warranty is offered by Canterbury Sink & Tap Pty Ltd of 1/34 Research Drive, Croydon South 3136, Victoria (ABN 17 102 702 965) as the sole Australian supplier of Nicolazzi Tapware. Nicolazzi tapware products imported and sold by Canterbury Sink & Tap Pty Ltd are made in Italy exclusively for Canterbury Sink & Tap Pty Ltd to comply with the applicable Australian standards. This warranty is only available to Nicolazzi tapware products purchased through Canterbury Sink & Tapware Pty Limited or purchased through authorised Canterbury Sink & Tap Pty Ltd distributors in Australia. All products must be installed in Australia to be applicable for this warranty.

PROOF OF PURCHASE

The official receipt with the purchase date from Canterbury Sink & Tap Pty Ltd or authorised distributor in Australia will be required as proof of purchase for any warranty claim. No copies will be accepted. If documentary evidence does not exist to support this proof of purchase, Canterbury Sink & Tap Pty Ltd is not liable to warrant, repair or supply parts for any product that cannot prove original purchase point in Australia.

TAPWARE WARRANTY

Canterbury Sink & Tap Pty Ltd warrants to replace or repair all Nicolazzi Tapware purchased from Canterbury Sink & Tap Pty Ltd or indirectly from one of Canterbury Sink & Tap Pty Ltd Australian distributors with a manufacturing fault in materials or workmanship in the body for a six (6) year period from the date of purchase.

WARRANTY FOR REPLACEABLE PARTS

Ceramic disc cartridges incorporated within Nicolazzi tapware are a replaceable part and have a parts replacement warranty for 12 months from the date of purchase. This replaceable parts warranty provides for the supply of replacement cartridges during this period. Flexible hand-shower and kitchen tap spray rinse hoses, O rings and washers, non-return valves, poppet valves and aerator inserts are also replaceable parts and covered by a 12 months parts replacement warranty from the date of purchase. This warranty excludes damage caused by misuse, improper installation or vandalism.

INSTALLATION REQUIREMENTS

This warranty for tapware and replaceable parts is void should the fault be found to be due to any of the following:

- AS/NZS 3500 stipulates the maximum static water pressure must not exceed 500kpa. Where the inlet water pressure exceeds 500kpa, pressure-limiting valves must be installed. This is also a requirement of the Nicolazzi Tapware manufacturer's installation instructions. Warranty claims may not be honoured where excessive water pressure is evident.
- The failure to fit in-line gauze filters on the incoming water supply lines as required by The Nicolazzi Tapware manufacturer's installation supply.
- Damage as a result of inadequate flushing of the water supply lines before use and problems caused by debris in the water supply i.e. pieces of metal, plastic, dirt, sand, rust, silt etc.
- Tapware must be installed by a Licensed Plumber in accordance with the relevant Standards and plumbing regulations, the Nicolazzi Tapware installation instructions and best trade practice.

ACCESSORIES WARRANTY

Canterbury Sink & Tap Pty Ltd warrants to replace or repair any Nicolazzi Tapware bathroom accessory purchased from Canterbury Sink & Tap Pty Ltd or indirectly from one of Canterbury Sink & Tap Pty Ltd Australian distributors in Australia with a manufacturing fault in materials or workmanship for a 12 months period from the date of the original purchase.

SOAP DISPENSER

Canterbury Sink & Tap Pty Ltd warrants to replace or repair any Nicolazzi Tapware soap dispenser purchased from Canterbury Sink & Tap Pty Ltd or indirectly from one of Canterbury Sink & Tap Pty Ltd Australian distributors in Australia with a manufacturing fault in materials or workmanship for a two (2) year period from the date of the original purchase.

FINISHES WARRANTY

Nicolazzi Tapware brass-ware products are manufactured in brass by craftsman in its factory in Italy. Some minor imperfections in the materials and finish are not defects, but a feature of a handmade product. Finishes are not covered under warranty.

REPLACEMENT PARTS

Canterbury Sink & Tap Pty Ltd undertakes to repair or replace all Nicolazzi tapware purchased from Canterbury Sink & Tap Pty Ltd or indirectly from one of Canterbury Sink & Tap Pty Ltd's authorised Australian Distributors where an unequivocal proven manufacturing fault has occurred in either material or workmanship or both in the tap body for a period of seven (7) years based on original date of purchase established via a purchase receipt. The warranty under any circumstances is Not transferable.

WARRANTY CLAIMS

To initiate a warranty claim, please contact Canterbury Sink & Tap or nominated agent from whom the product was purchased. Proof of purchase will be required. Warranty service cover is provided during normal working hours by Canterbury Sink & Tap Pty Ltd or a nominated agent in state capital cities and otherwise within the normal operating areas of authorized Canterbury Sink & Tap Pty Ltd dealers. Service arrangements elsewhere are provided at the discretion of Canterbury Sink & Tap Pty Ltd. The customer is responsible to provide all relevant details of the faulty product including model, finish and the nature of the alleged fault. Canterbury Sink & Tap Pty Ltd may request that the customer provide photographs of the alleged fault or take basic steps to determine the cause. Where necessary or reasonable, Canterbury Sink & Tap Pty Ltd reserves the right to require an allegedly faulty product or part to be returned for inspection or repair with the associated costs of the return borne by the customer. Where a service call is made and the alleged fault is not covered under the product warranty (e.g. where there is an installation issue which voids the warranty), the customer will be liable to pay for the service fee. A fee will be charged where a service call is made based on the misidentification of another brand product as Nicolazzi. Failure to attend a mutually agreed service appointment will incur a fee.

WARRANTY CONDITIONS AND EXCLUSIONS

This warranty is subject to the product having been installed in accordance with the relevant installation instructions and Australian, state and local Standards by a Licensed plumber, including where applicable limiting inlet water pressure to a maximum of 500kpa at point of installation (AS/NZS 3500) installing in-line gauze filters, compliance with water temperature limitations and adequately flushing the water supply lines prior to installation of the product.

This warranty does not apply to damage, defects or other malfunctions caused by normal wear and tear, improper installation or maintenance, accident, neglect, vandalism, misuse, alteration modification, unusual physical or environmental conditions, use in an application for which the product was not intended or designed, or the use of harsh, abrasive or chemical cleaners. Other than in accordance with this warranty and Australian consumer law, Canterbury Sink & Tap Pty Ltd shall not be held liable for any damage (direct, indirect or consequential), injury, loss, harm, inconvenience or the other detriment, whether physical, financial or otherwise arising directly or indirectly from the purchase, carriage, installation or use of the goods in anyway. Canterbury Sink & Tap Pty Ltd reserves the right to alter or amend the warranty at any time. March 2015.

E&OE Disclaimer

While every care has been exercised in compiling and publishing the data contained in these pages, CST accepts no responsibility for errors or omissions of the information contained where there is the possibility of human error. Therefore on this basis neither CST or any of its providers of information accept any liability for the accuracy of the information contained or omissions therein and none of the foregoing parties shall be liable for any third-party claims or losses of any nature, including, but not limited to, lost profits, punitive or consequential damages. CST reserves the right to remove or alter without notice any goods or material be discontinued or deemed unsuitable for whatever reason and recommends that the enquirer contacts CST to qualify the availability and/or suitability of a product prior to purchase & ultimate installation. Failure to do so could null and void any subsequent claim whereas CST, for whatever reason, will not be held liable for any actions, claims, proceedings, costs, losses and damages whatsoever including but not limited to libel, slander or infringement or copyright or other intellectual property rights or death, bodily injury or property damage and howsoever arising out of or in connection with or by reason of the product. All copyright are reserved whereas no part of this publication may be reproduced, stored in a retrieval system, or transmitted, in any form or by any means, without the prior written permission from Canterbury Trading Pty Ltd T/A Canterbury Sink & Tap and hereby known as CST within this disclaimer.

Whilst every effort is made to replicate the colours in our "COLOUR OPTION" menu as accurate as photographic reproduction will allow, it must be used as a guide only and cannot be considered as true representation of the colour. To ensure that you are 100% satisfied with your colour choice we strongly recommend always refer to the actual finished tapware article and CST accept no liability for product selected from the colour chart without reference to the true colour sample.

Quick reference page finder

	Colour option	2
	Unique colour menu	3
MODEL CODE	KITCHEN TAPWARE	PAGE
1406	Single hole lever kitchen sink mixer with traditional swivel spout	10
1406WS	Single hole lever kitchen sink mixer with traditional swivel spout & separate hand spray	10
1469	Single hole kitchen sink mixer with traditional swivel spout	11
2606	Single hole kitchen sink mixer with goose neck swivel spout	11
3407	Single hole lever kitchen sink mixer with off-set traditional swivel spout	12
3407WS	Single hole lever kitchen sink mixer with off-set traditional swivel spout & separate hand spray	12
3479	Single hole lever kitchen mixer with traditional swivel spout	13
3479WS	Single hole lever kitchen mixer with traditional swivel spout & separate hand spray	13
1420	Two-hole French Provincial bridge kitchen mixer with traditional swivel spout	14
1458WS	Three-hole bridge kitchen sink mixer with traditional swivel spout & separate hand spray	14
1459	Two-hole bridge kitchen sink mixer with traditional swivel spout	15
1460	Two-hole bridge kitchen sink mixer with goose neck swivel spout	15
1460WS	Three-hole bridge kitchen sink mixer with goose neck swivel spout & separate hand spray	16
1457	Wall mounted kitchen sink mixer with traditional swivel spout	16
1435	Filter tap with traditional spout	17
1635	Filter tap with goose neck spout	17
1451	Wall mounted pot filler with swivel arm spout	18
1452	Deck mounted pot filler with swivel arm spout	18
MODEL CODE	BATHROOM TAPWARE	PAGE
1401	Wall mounted bathtub classic style filler with cradle hand shower	21
1441	Wall mounted bathtub classic style filler	21
5574	Pair of chrome vertical stand pipes to convert 1401 & 1441 to freestanding floor mounted bathfiller	22
5576 & 5576L	Pair of deck mounted leg extensions, 2 heights	22
1400	Wall mounted bathtub filler to be combined with column shower	23
1449	Deck mounted bathtub mixer on edge type with 4 holes	23
1404	Deck mounted four-hole bathtub mixer set with separate hand spray	24
1439	Deck mounted three-hole bathtub mixer	24
C1477 & 1478	Wall mounted traditional bath spouts – 185 & 245mm in length	25
C2503	Bath filler classic smooth spout – 160mm long (can be combined with 2 x 1412 wall valve or 3406/3460 concealed mixer valve see page 42/43)	25
1412	Deck/wall mounted hot or cold valve/stop cock	26
1477	Wall mounted bathfiller with traditional styles pout & wall valves	26
1432T	Single-hole basin mixer with traditional swivel spout	27
3402	Single hole basin mixer with classic smooth spout	27
3471	Single hole basin mixer with traditional spout	28
3472	Single hole tall basin mixer with traditional spout (suitable for counter-top washbasin)	28
1408	Deck mounted wash basin mixer with automatic pop-up waste	29
1409	Deck mounted wash basin mixer with automatic pop-up waste	29
1419	Deck mounted bridge mixer with pop-up waste	30
1417	Basin pillar tap	30
MODEL CODE	ART DECO BATHROOM TAPWARE	PAGE
1900	Wall mounted bathtub Art Deco style filler suitable for connection with column shower	32
1901	Wall mounted bathtub Art Deco style filler with cradle hand shower	32
1912+C1803	Deck/wall mounted hot & cold valves + bath spout Art Deco style	33
1904	Deck mounted four-hole bathtub mixer set with separate hand spray	33
1908	Deck mounted three-hole wash basin mixer with spout, 2 x deck valves & automatic pop-up waste	34
C1803	Wall mounted Art Deco style bath spout	34

MODEL CODE	SHOWER RANGE	PAGE
5-30025	Column shower with canister shower head	36
5-30226	Column shower with canister shower head, adjustable bracket & integral diverter	36
5-30025	Column shower option page	37
5-30226	Column shower option page	38
5-84202	Colonial Brass sliding rail with control options	39
5-84500	Colonial Brass sliding rail with 5 jets head & control options	39
5-33630	Wall mounted connection for shower columns & hoses	40
5-20830C50	Column shower extension	40
1400	Wall mounted bathtub filler to be combined with column shower	41
1425	Shower mixer external	41
3406	Single lever concealed shower mixer & finished set (combine with concealed wall valve C4006)	42
3460	Single lever concealed shower mixer with diverter & finished set (combine with concealed wall valve C4006)	42
3406/3460	Single lever concealed shower mixer valve combination options	43
5-23015	150mm Canister shower head	44
5-23021	220mm Canister shower head	44
5-23030	300mm Canister shower head	44
5-20126C15	150mm Ceiling leg for shower head	44
5-20126C30	300mm Ceiling leg for shower head	44
5-20126C60	600mm Ceiling leg for shower head	44
5-20026C15	150mm Wall arm for shower head	44
5-20026C30	300mm Wall arm for shower head	44
5-20026C50	500mm Wall arm for shower head	44
5-23015	350mm Traditional arm with 150mm canister shower head	45
5-23921	350mm Traditional arm with 220mm canister shower head	45
5-23020	350mm Traditional arm with 300mm canister shower head	45
5-24980	Canterbury wall mounted body jet combined with 3460 or 1412 to operate the body jet)	46
MODEL CODE	BATHROOM TAPWARE	PAGE
1482	Slotted towel holder	49
1483	Towel holder	49
1484	Towel holder 45cm	49
1486	Towel holder 60cm	49
1498	Double towel holder	49
1485	Towel ring	49
1499	6 Rail towel holder	50
5-70165	Grab rail 50cm	50
5-70160	Grab rail 90cm	50
1480	Shelf	50
1497	Spare paper holder	50
1492S	Paper holder	50
1492	Paper holder with cover	50
149405	Paper holder Tiede	50
1488	Ceramic tumbler & holder	51
1489	Ceramic soap dispenser & holder	51
1494	Soap & tumbler holder	51
1493	Double soap holder	51
1495	Corner soap holder	51
1487	Ceramic soap dish & holder	51
6007	Soap dispenser	52
LS850	Soap/lotion dispenser	52
1481	Clothes hanger	52
1491	Ceramic toilet brush container & brush with cover	52
1490	Ceramic wall mounted toilet brush & holder	52
	Nicolazzi tapware warranty	54
	Other products from Canterbury sink & tap	58
	Nicolazzi kitchen & bathroom handle collection	59

HOW TO MAKE YOUR SELECTION.....?

With the Nicolazzi range you more often than not require at least three components to make up your tapware and that begins with the model number of the item you have chosen, the colour finish you feel is right for your project & finally your choice of handle, for example with a kitchen tap you would order it as follows:

TAPS – Select the tap model you require (Kitchens or Bathrooms) e.g. Model 1406

COLOUR – Select the colour example (colour chart page 2) e.g. Chrome (CR)

HANDLE or LEVER – Select your handle (Handle chart page 59) 69 EL CAPITAN

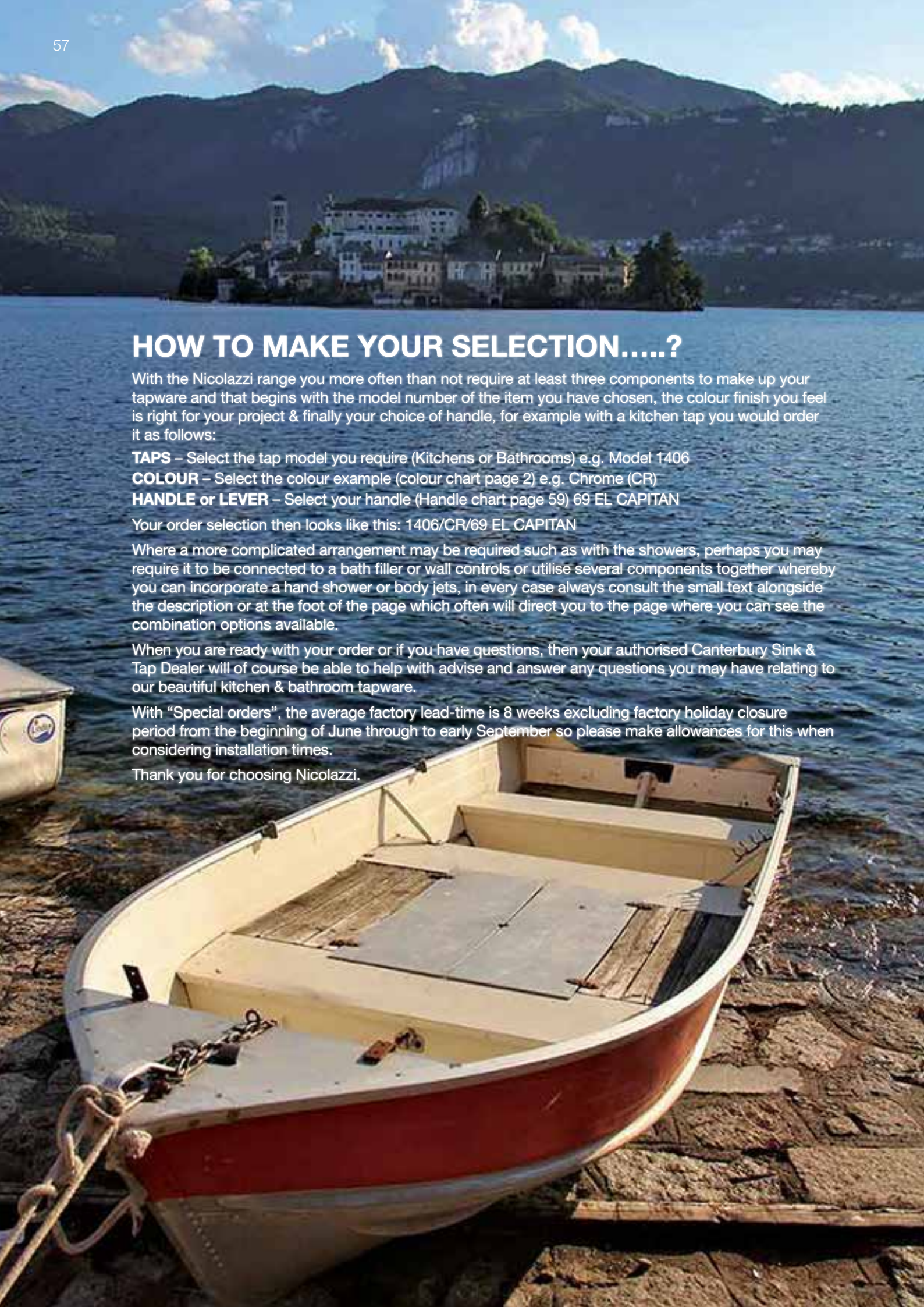
Your order selection then looks like this: 1406/CR/69 EL CAPITAN

Where a more complicated arrangement may be required such as with the showers, perhaps you may require it to be connected to a bath filler or wall controls or utilise several components together whereby you can incorporate a hand shower or body jets, in every case always consult the small text alongside the description or at the foot of the page which often will direct you to the page where you can see the combination options available.

When you are ready with your order or if you have questions, then your authorised Canterbury Sink & Tap Dealer will of course be able to help with advise and answer any questions you may have relating to our beautiful kitchen & bathroom tapware.

With “Special orders”, the average factory lead-time is 8 weeks excluding factory holiday closure period from the beginning of June through to early September so please make allowances for this when considering installation times.

Thank you for choosing Nicolazzi.



Other products from Canterbury sink & tap

To see our complete range of kitchen & bathroomware ask for our catalogue selection beginning with the Shaws Handcrafted Sink Collection.

In the bathroom see our ceramic bathware and bathtub in the “Bringing Bathrooms to life, for life” catalogue. We also have a full range of composite freestanding bathtubs and basins in the “Boutique Bathroom” catalogue. The bathware ranges are further complimented with our heated towel radiator range with both traditional and contemporary style. Each 30 page publication showcases everything you need for your bathroom from traditional to contemporary designs, from vanities to baths and tiles.

REQUEST YOUR COPY FROM YOUR RETAILER NOW or see it on our website www.sinkandtap.com.au

Shaws Kitchen Sinks



This unique range of ceramic kitchen sink in a number of styles and sizes suitable for either traditional or contemporary environments where the sink is a key figure of the kitchen design.

Handcrafted by Shaws of Darwin in the UK for over 100 years, this superb range of sink offers the ultimate in ceramic kitchenware.



Canterbury Bathrooms



Traditional bathware with high level WC closets, washbasin pedestals, washstands and much more produced exclusively for Canterbury by “Imperial bathware” in the UK. This range is complimented with cast iron bathtubs, mirrors, lighting and accessories to embrace both traditional and Art Deco themes.

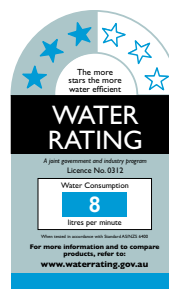


Our website www.sinkandtap.com.au

All products in this catalogue can be found on our user friendly website www.sinkandtap.com.au. Updated regularly it is a great place to view our latest products, specials, news and technical information, all designed to make your selection process as easy as possible.

As well as being our most up to date information source, each product page features:

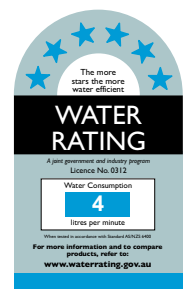
- Detailed product information
- Multiple product images
- Downloadable PDF technical specification sheets.



Showers



Tapware



Hand Spray

KITCHEN & BATHROOM HANDLE COLLECTION

LEVERS



05 ART DECO METAL –
lever handle metal finish



07 TOSA –
lever handle elegant shaped metal finish



17 ART DECO CRYSTAL –
crystal lever handle metal finish



34 CRYSTAL LIBERTY –
lever handle metal & Swarovski clear crystal



43 CRYSTAL LIBERTY –
lever handle metal & Swarovski black crystal



69 EL CAPITAN –
lever handle metal finish



78 PETIT MONT BLANC –
lever handle metal & white ceramic



78A PETIT MONT BLANC ANTIQUE –
lever handle metal & white antique ceramic



78B PETIT MONT BLANC –
lever handle metal & black ceramic



79 FOREST –
lever metal finish & solid wood handle

SWIVEL LEVERS



33 CRYSTAL LIBERTY –
swivel lever metal finish & Swarovski clear
crystal handle



40 CRYSTAL LIBERTY –
swivel lever metal finish & Swarovski black
crystal handle



75 EL CAPITAN –
swivel lever handle metal finish



76 PETIT MONT BLANC –
swivel lever metal finish & white ceramic handle



76A PETIT MONT BLANC ANTIQUE –
swivel lever metal finish & white ceramic handle



76B CERAMICA NERO –
swivel lever metal finish & black ceramic handle



77 FOREST –
swivel lever metal finish & solid wood handle

CROSS/DOME HEAD



93 CRYSTAL HALF DOME HANDLE –
metal finish



18 DAME ANGLAISES –
cross head



70 HALF DOME HANDLE –
metal finish



15 CRYSTAL DOME HANDLE –
metal finish

NicoLazzi





Excellence in design. Exquisite in quality.

CANTERBURY SINK & TAP

Unit 1, 34 Research Drive, Croydon South, Vic. 3136

T +61 (3) 9761 4603 F +61 (3) 9761 7023

E sales@sinkandtap.com.au

www.sinkandtap.com.au