



Wall Panel Installation



Marking out prior to installing



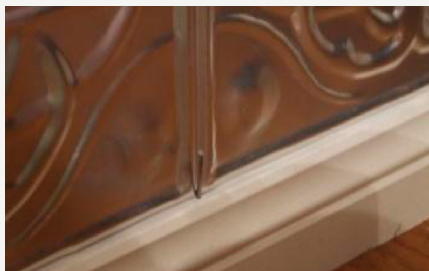
Panel cut out for A/C vent



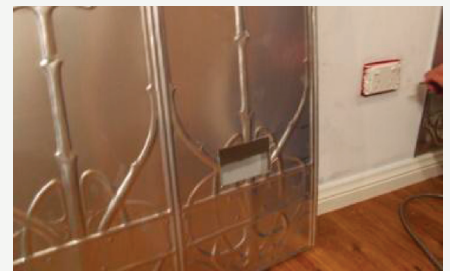
Panel folded returning around wall



Sheets can be folded simply using a straight edge



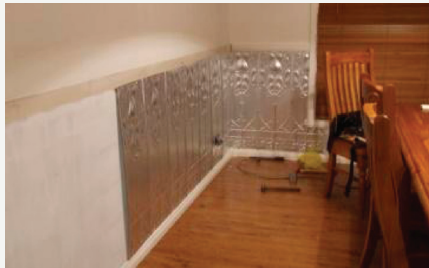
Hold in place temporarily with a nail prior to permanent fixing



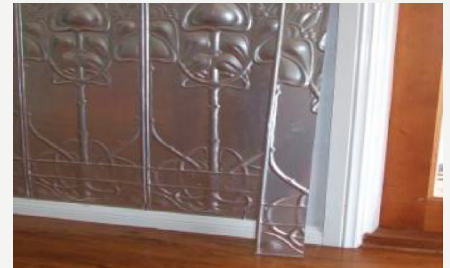
Cut out section for power points etc



Installed panel corner & cutouts



Panels being installed as shown



Panel with small infill section



One way to cut infill sections out



Completed wall prior to painting



Completed wall after priming and painting

All items are shown as a guide only. Pressed Tin Panels® do not carry any responsibility for how individual panels are installed. If you have any questions please feel free to contact us. Panel shown is the Art Nouveau. Guide is for panels being fixed to walls only.